

Region 10's Mitigation Team:

New Faces, New Programs, and New Opportunities to Collaborate

Kristen Meyers, Mitigation Division Director, FEMA Region 10



FEMA

A (re)Introduction to our Team

The FEMA Region 10 Mitigation Division has changed **A LOT** since our last in person Mitigation Summit in 2019.

Since 2019, we have:

- Created two (2) new Branches (Mitigation Disaster Operations, Community Resilience and Infrastructure Grants) and established a Division Front Office led by a new Deputy Director
- Added more than 30 new members to our team to meet our expanding mission...with ~40 or more on the way.
- Established three (3) new grant programs (Building Resilient Communities and Infrastructure, Safeguarding Tomorrow Revolving Loan Fund, and Rehabilitation of High Hazard Potential Dams) and expanded the scope and scale of several others (Flood Mitigation Assistance, National Dam Safety Program).
- Updated and revised many program guidance documents to incorporate equity and the impacts of future climate conditions.



Our Team is Focused on our, Mission, Vision, and YOU

- While our team has evolved, expanded, and been restructured, we have kept three (3) things in mind as we have made these changes:
 - How will these changes help us support our partners better?
 - Will these changes help us achieve our regional mission more quickly?
 - How will these changes further our vision for regional resilience?

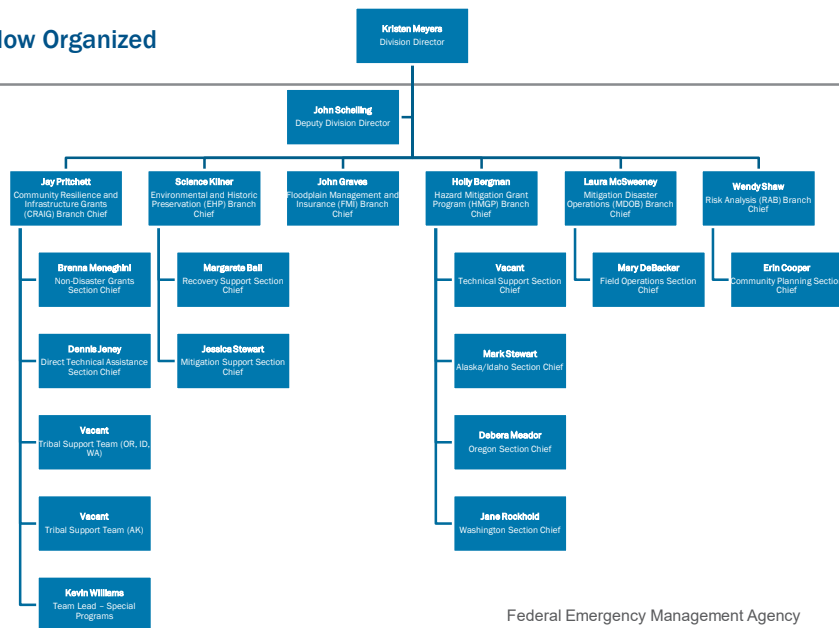
OUR MISSION AND VISION

Mission: FEMA R10 Mitigation helps communities understand risk and guides hazard resiliency.

Vision: Leaders in achieving resilience and reducing disaster vulnerability.



How our Team is Now Organized



Division Leadership Team

Kristen Meyers, Director



- John Schelling, Deputy Division Director
- John Graves, Branch Chief, Floodplain Management and Insurance



- Jackie "Jay" Pritchett, Branch Chief, Community Resilience and Infrastructure Grants
- Science Kilner, Branch Chief, Environmental and Historic Preservation Compliance

- Wendy Shaw, Branch Chief, Risk Analysis

- Laura McSweeney, Branch Chief, Mitigation Disaster Operations

- Holly Bergman, Branch Chief, Hazard Mitigation Grants Program



5

Mitigation Division Front Office

John Schelling, Deputy Division Director



NOISE ONLY
HOURS 9-5

Mission: FEMA R10 Mitigation helps communities understand risk and guides hazard resiliency.

Vision: Leaders in achieving resilience and reducing disaster vulnerability.

Secretary
Vanessée Lindo

Mitigation Advisor
Christine Brown



6

Community Resilience and Infrastructure Grants Branch (CRAIG)

Pre-Disaster competitive mitigation grant programs provide our communities funding to address risks from natural disasters such as wildfires, drought, earthquakes, extreme heat, and increased flooding to foster greater community resilience and reduce disaster suffering.

Jackie "Jay" Pritchett, Jr., Branch Chief



CRAIG Programs

- Building Resilient Infrastructure and Communities (BRIC)
- Flood Mitigation Assistance (FMA)
- Pre-Disaster Mitigation (PDM) Grants
- Safeguarding Tomorrow Revolving Loan Fund
- Rehabilitation of High Hazard Potential Dam (HHPD) Grant Program



Federal Emergency Management Agency

CRAIG Non-Disaster Grants Management Section

Brenna Meneghini, Section Chief



Section Staff



- Jimi Hightower, Grants Management Specialist
- Robert McCulloch, Grants Management Specialist
- Sergio Madrid, Grants Management Specialist



**CRAIG
Special Programs**

Kevin Williams, Team Lead



Section Staff

- Vacant, Emergency Management Specialist (Dam Safety)
- Vacant, Emergency Management Specialist (STORM)

**CRAIG
Direct Technical Assistance Section**

Dennis Jeney, Section Chief



Section Staff

- Vacant, Grants Management Specialist
- Vacant, Vacant, Engineer
- Grants Management Specialist

CRAIG
Tribal Support Section (Alaska)

Vacant, Section Chief

Section Staff

- Vacant, Senior Emergency Management Specialist
- Vacant, Emergency Management Specialist
- Vacant, Emergency Management Specialist
- Vacant, Emergency Management Specialist
- Vacant, Emergency Management Specialist
- Vacant, Emergency Management Specialist



CRAIG
Tribal Support Section (OR, ID, WA)

Vacant, Section Chief

Section Staff

- Vacant, Senior Emergency Management Specialist
- Vacant, Emergency Management Specialist
- Vacant, Emergency Management Specialist
- Vacant, Emergency Management Specialist
- Vacant, Emergency Management Specialist



Environmental and Historic Preservation Compliance Branch (EHPC)

Environmental, cultural, and historic resources help define communities and contribute to their well-being. We play a critical role in considering these resources by advising on and coordinating federally mandated EHP compliance for FEMA grant programs in coordination with Recipients, Subrecipients, and in consultation with regulatory/resource agencies.

Science Kilner, Branch Chief



EHPC Programs

- Environmental Planning and Historic Preservation
- Environmental and Historic Preservation Compliance
- Regulatory Program and Resources

Senior Environmental Protection Specialists

William "Bill" Kerschke



Galeeb Kachra



Federal Emergency Management Agency

EHPC Mitigation Support Section

Jessica Stewart, Section Chief



Section Staff



- Philip Fisher, PhD., Archeologist
- Jeffrey Parr, Biologist
- Erin Legge, Biologist
- Owen Coskey, Compliance
- Jonathan Witt, Compliance



EHPC Recovery Support Section

Margaret "Maggie" Ball, Section Chief



Section Staff



- Laura Herriott, Environmental Protection Specialist
- Eric Welch, Environmental Protection Specialist
- Jack Dapo, Environmental Protection Specialist
- Vacant, Archaeologist

15

Floodplain Management and Insurance Branch (FMI)

We ensure communities are more resilient through the implementation of sound floodplain management that reduces risk from flooding, protects the natural and beneficial functions of floodplains, and helps people become financially prepared to recover from a flooding event through insurance.

John Graves, Branch Chief

FMI Programs



- Floodplains and Wildlife Conservation
- Flood Risk and Endangered Species Habitat (FRESH) Mapping Tool
- Federal Flood Risk Management Standard (FFRMS) Support

Insurance: Provides outreach and education to property owners, insurance agents and other stakeholders with regards to obtaining a flood insurance policy or guiding them through the claims process.

National Flood Insurance
Scott Van Hoff

Community Planning
Michelle Parke

Endangered Species Habitats
Bryr Harris



Federal Emergency Management Agency

16

FMI Community Assessment, Planning, and Education (CAPE) Section

Karen Wood-McGuinness, Senior Specialist



Our Tool kit holds:

- Community Assistance Program – State Support Services Element
- Community Rating System Program
- National Flood Insurance Program



Section Staff

We conduct audits to assess local community floodplain management programs and provide technical assistance and education on how to incorporate floodplain management into their regulations, planning processes, and building codes.



- Roxanne Reale-Pilkenton, Western Washington
- Suzie Sarpong, Idaho
- Mitch Paine, Alaska/ Western Oregon
- Vacant, Eastern Washington

Hazard Mitigation Grants Program (HMGP)

Hazard Mitigation is the long-term solution we use to reduce the impact of losses and rebuild in a way that strengthens our communities against disasters in the future.

Holly Bergman, Branch Chief



HMGP

- Hazard Mitigation Grant Program and Resources

Engineers

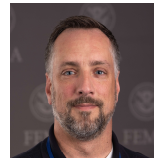
Mustafa Al Khafaji

Howard Lee



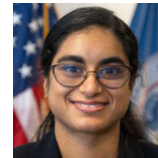
Senior Emergency Management Specialist

Jeff Markham



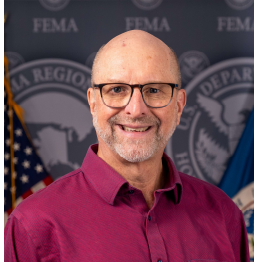
Management and Program Analyst

Roseanne Athappilly



**HMGP
Alaska/Idaho Disaster Section**

Mark Stewart, Chief



Section Staff



- Jessica Tissell, Lead, Emergency Management Specialist
- Marisa Karpinski, Emergency Management Specialist
- Elizabeth "Katja" Fiertz, Emergency Management Specialist
- Marina Clough, Grants Management Specialist

19

**HMGP
Oregon Disaster Section**

Debera Meador, Chief



Section Staff



- Beth Leavitt, Emergency Management Specialist
- Elizah French, Emergency Management Specialist

20

**HMGP
Washington Disaster Section**
Jane Rockhold, Chief



Section Staff



- Cody Cibart, Grants Management Specialist
- Tatiana Perovskaya, Emergency Management Specialist
- Carlos Sinde, Grants Management Specialist

**Mitigation Disaster
Operations Branch (MDOB)**

Laura McSweeney, Branch Chief



MDOB Programs

- Administrative Support Services
- Best Practice Stories
- Data Research, Collection, and Analysis
- Mitigation Strategic Planning and Resource Management
- Preliminary Damage Assessments
- Stakeholder Engagement and Outreach
- Technical Assistance and Training and Product Development

Disaster Mitigation Program Section Staff

Engineers

Mayra Garcia

Zaid Baraya

Training and Outreach

John Valett



Federal Emergency Management Agency

**MDOB
Field Operations Management Section**

Mary DeBaker, Section Lead



Section Staff



- Robert "Eric" Hays, Data Integration Specialist
- Isabella Montalvo, Management Coordinator
- Vacant, Training and Support Specialist

23

**MDOB
Community Education and Outreach Program
Section**

Mary Witucki, Section Lead



Section Staff



- Luke Loranger, Best Practice Writer/ Product development
- Rachel Behling, Field Operations Coordinator

24

Risk Analysis Branch (RAB) Partnering with communities and empowering their journey toward an equitable and resilient future.

Wendy Shaw, Branch Chief



RAB Programs

- Risk Mapping, Assessment, and Planning Program
- Cooperating Technical Partners Program
- Hazard Mitigation Planning Program
- National Dam Safety Program
- National Earthquake Hazard Reduction Program
- National Tsunami Hazard Mitigation Program, Support
- Building Sciences

Earthquake, Tsunami, and Volcano Program:
Vacant



Building Code Specialist
Vacant



Federal Emergency Management Agency

RAB
Risk Mapping, Assessment, and Planning
(RiskMAP) Section

Floodplain Engineers



- [Ted Perkins](#)
- [Dale Meck](#)

Risk Analysts



- [Marshall Rivers](#), Analyst
- [Rynn Lamb](#), Analyst
- [Kara Jacobacci](#), Analyst



RAB
Community Planning Section

Erin Cooper, Section Chief



Section Staff



- Vacant, (FEMA Integration Team, Idaho)
- Jennifer N. Adleman, (Alaska Area Office)
- Vacant, (FEMA Integration Team, Oregon)

27

Moving Forward

- As you can see, we have grown and evolved since we hosted our last Mitigation Summit!
- We continue to use our guiding questions and are keeping in mind how we can best serve our partners as our team delivers on our expanded mitigation mission in 2023 and beyond. We also welcome and value your feedback and input.
- We are excited about the possibilities that our expanded team and capacity bring and the opportunities we have, both now and in the future, to connect and collaborate more with you in order to create more resilient communities across Region 10.



Federal Emergency Management Agency

28

Thank You



FEMA