

AJO

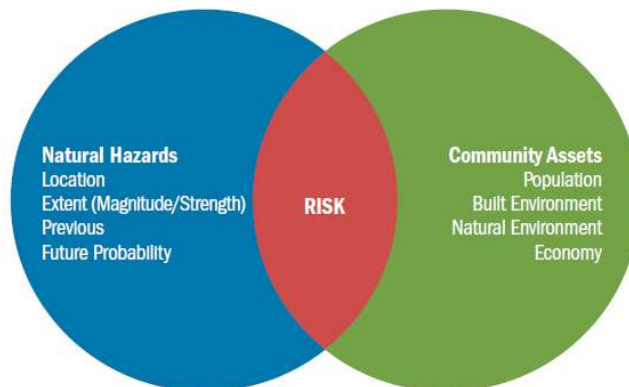
Mitigation Planning & Equity/Climate Considerations in FEMA's New Planning Guidance

Erin Cooper & Jenn Adleman



FEMA

Hazard Mitigation Planning: *Planning to Reduce Risk*



Slide 100

AJO happy to change out photos to ones of places iin R 10

Adleman, Jennifer, 2023-02-23T18:25:40.952

Hazard Mitigation





Mitigation: Elevating a home by the river



Mitigation: Acquiring a property



Mitigation: Adopting a Building code



Preparedness and Response: Purchasing a Police Command Vehicle

Sustained activities that reduce or eliminate risks in the long-term.

Short-term and response solutions.

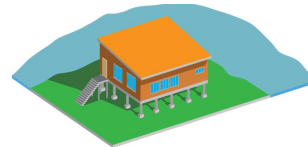


Mitigation Supports Long-Term Resilience

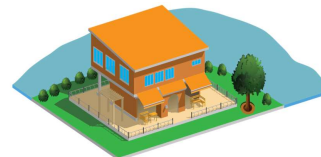
Return to normal



Reduce future vulnerability



Support community objectives

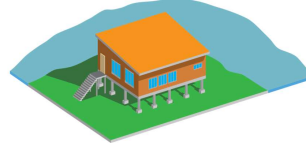


Mitigation Supports Long-Term Resilience

Return to normal



Reduce future vulnerability



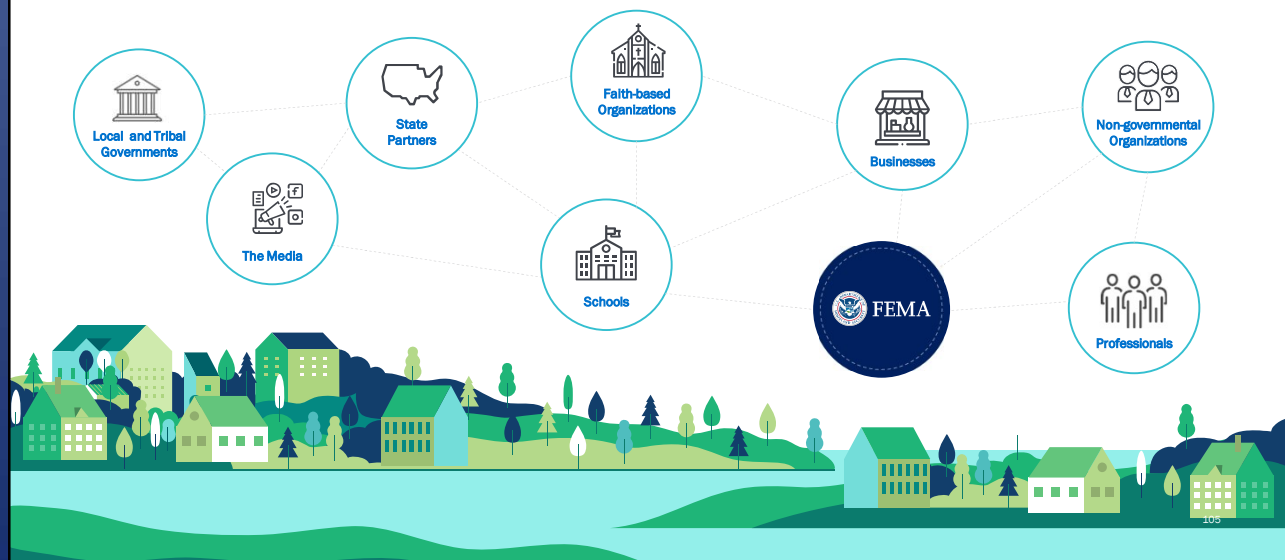
Support community objectives



Community Assets
Population
Built Environment
Natural Environment
Economy

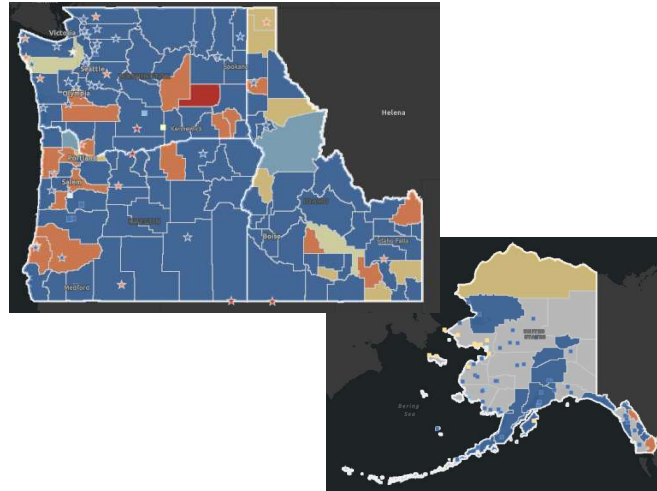


Planning with and for the Whole Community



Mitigation Planning in Region 10

- All four Region 10 states have FEMA-approved state mitigation plans.
- More than 1,000 local jurisdictions are part of a mitigation plan that has FEMA-approval or is currently approvable-pending-adoption (APA).
- This includes over 100 tribal governments.



Federal Emergency Management Agency 106

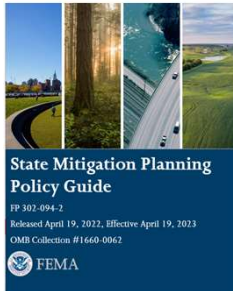
Hazard Mitigation Planning Policies



AJO

Introducing the 2022 State and Local Mitigation Planning Policy Guides

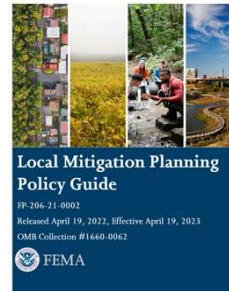
FEMA's policy on and interpretation of Title 44, Part 201 of the Code of Federal Regulations.



Section 201.3:
Responsibilities

Section 201.4: Standard
State Requirements

Section 201.5: Enhanced
State Requirements



Section 201.3:
Responsibilities

Section 201.6: Local
Requirements



Federal Emergency Management Agency

108

Key Objectives

- Underscore the value of mitigation planning.
- Align with FEMA strategic priorities. This includes planning for climate change, future conditions, and equity.
- Connect mitigation planning to community planning and building codes.
- Support integration with FEMA programs and recent updates.
- Incorporate [feedback](#) from stakeholder engagement sessions.
- Streamline plan review and approval process.



Federal Emergency Management Agency

109

Slide 108

AJO May be worth mentioning that the Tribal policy is being updated.

Adleman, Jennifer, 2023-02-23T18:21:22.868

Spotlight: Planning for Equity and Climate Change

2022-2026 FEMA Strategic Plan



Goal 1: Instill Equity as a Foundation of Emergency Management

- 1.1 Cultivate a FEMA that prioritizes and harnesses a diverse workforce
- 1.2 Remove barriers to FEMA programs through a people first approach
- 1.3 Achieve equitable outcomes for those we serve



Goal 2: Lead Whole of Community in Climate Resilience

- 2.1 Increase climate literacy among the emergency management community
- 2.2 Build a climate resilient nation
- 2.3 Empower risk-informed decision making





Equity: The consistent and systematic fair, just, and impartial treatment of all individuals.

112

Equity in the Local Mitigation Planning Policy



Planning Process must:

- Be an opportunity for involvement of stakeholders representing socially vulnerable and underserved communities.
- Give members of underserved communities the opportunity to participate.



Risk Assessment must:

- Describe the vulnerability of each jurisdiction, including socially vulnerable and underserved communities.



Mitigation Strategy should:

- Include actions that benefit underserved communities and socially vulnerable populations.
- Evaluate actions using qualitative benefits, including how they benefit underserved and socially vulnerable communities.



Equity in the State Mitigation Planning Policy



Planning Process should:

- Describe how the state coordinated with agencies whose programs support socially vulnerable and underserved communities.
- Describe how the state coordinated with other groups that support socially vulnerable and underserved communities.



Risk Assessment must:

- Analyze vulnerability of jurisdictions with respect to the impacts to populations, including socially vulnerable and underserved communities.
- Summarize recent development and projected development, including demographic changes that put certain communities at risk.



The plan:

- Must describe the effectiveness of local mitigation efforts, including gaps and disparities in serving these populations.
- Should consider underserved and socially vulnerable communities when prioritizing jurisdictions to receive grant funding.



Supporting Inclusive Planning

- Equity is about providing everyone with what they need—not providing everyone with the same thing.
- Consider access to information.
- Never go into a situation with a solution in mind.
- Resilience and mitigation planning should benefit the whole community.
- We don't know what we don't know.



AJO

**“Change is the Only
Constant” – Heraclitus
500 B.C.E.**

“Show Your Stripes” Climate Visualization,
1850-2021 global data. Credit: Professor Ed
Hawkins (University of Reading).
<https://showyourstripes.info/>



Federal Emergency Management Agency

Climate Change in the Policies

- Plans must include the probability of future hazards.
- Probability must include considerations of changing future conditions, including climate change, on:
 - Type,
 - Location, and
 - Range of anticipated intensities of identified hazards.



Federal Emergency Management Agency

117

Slide 116

AJO We have this plastered on the exterior wall of the old Nordstrom's in downtown :-)

Adleman, Jennifer, 2023-02-23T18:26:26.297

Planning for Climate Change and Future Conditions



Climate



Population



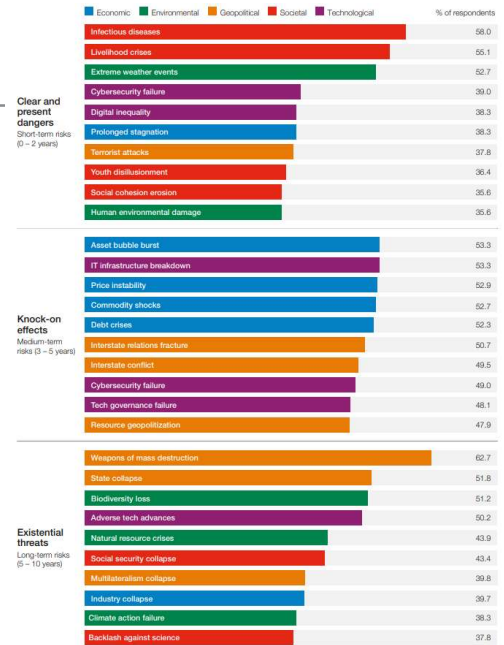
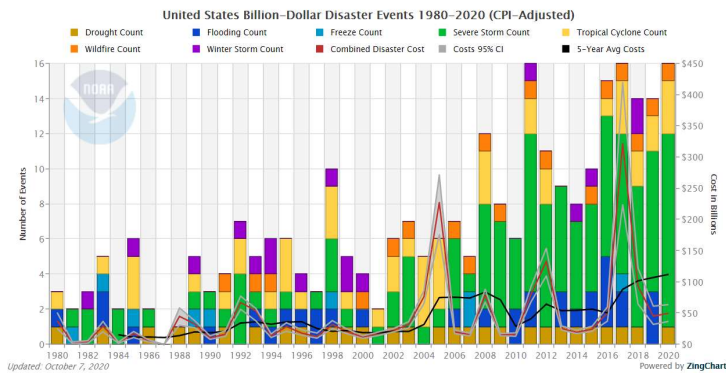
Land Use



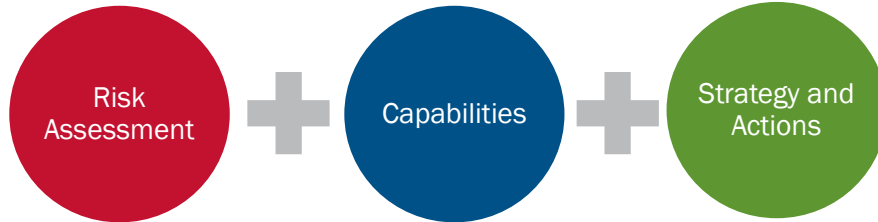
Federal Emergency Management Agency

118

Why We're Here: Future Conditions – More Than Weather



Incorporating Climate Change Across the HMP

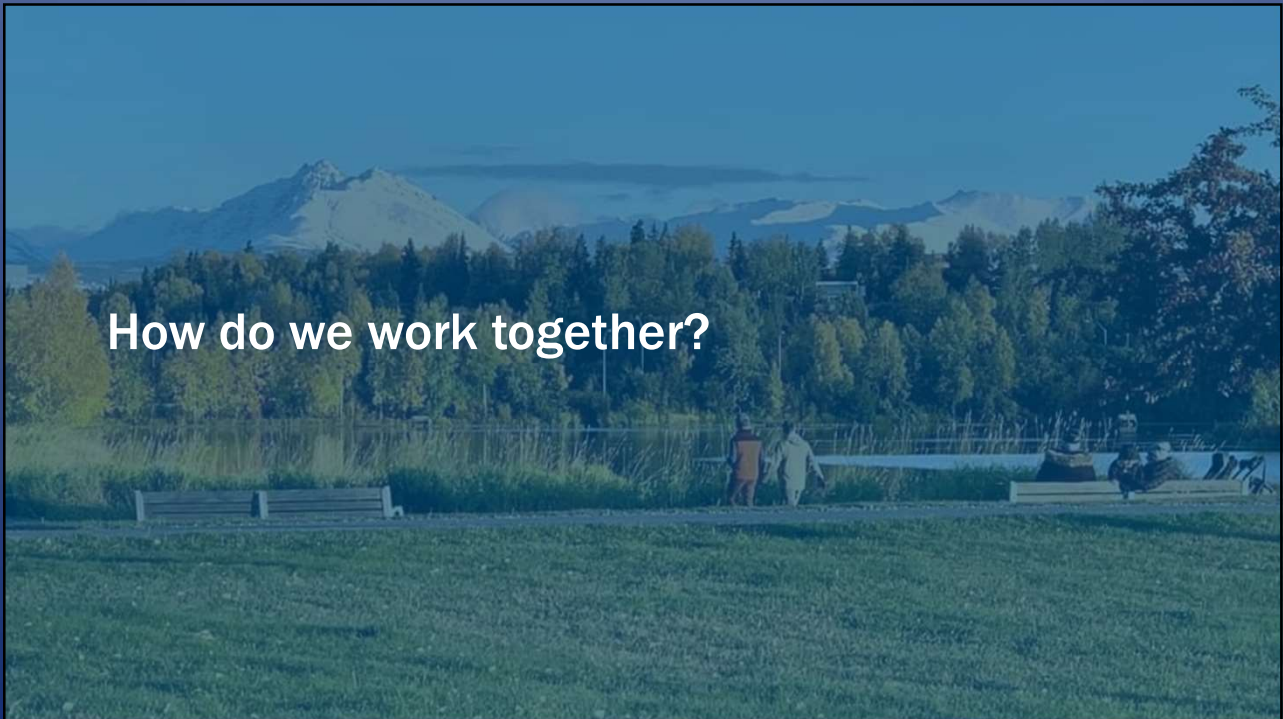


Climate change is relevant to all sections of the hazard mitigation plan!



Federal Emergency Management Agency

120

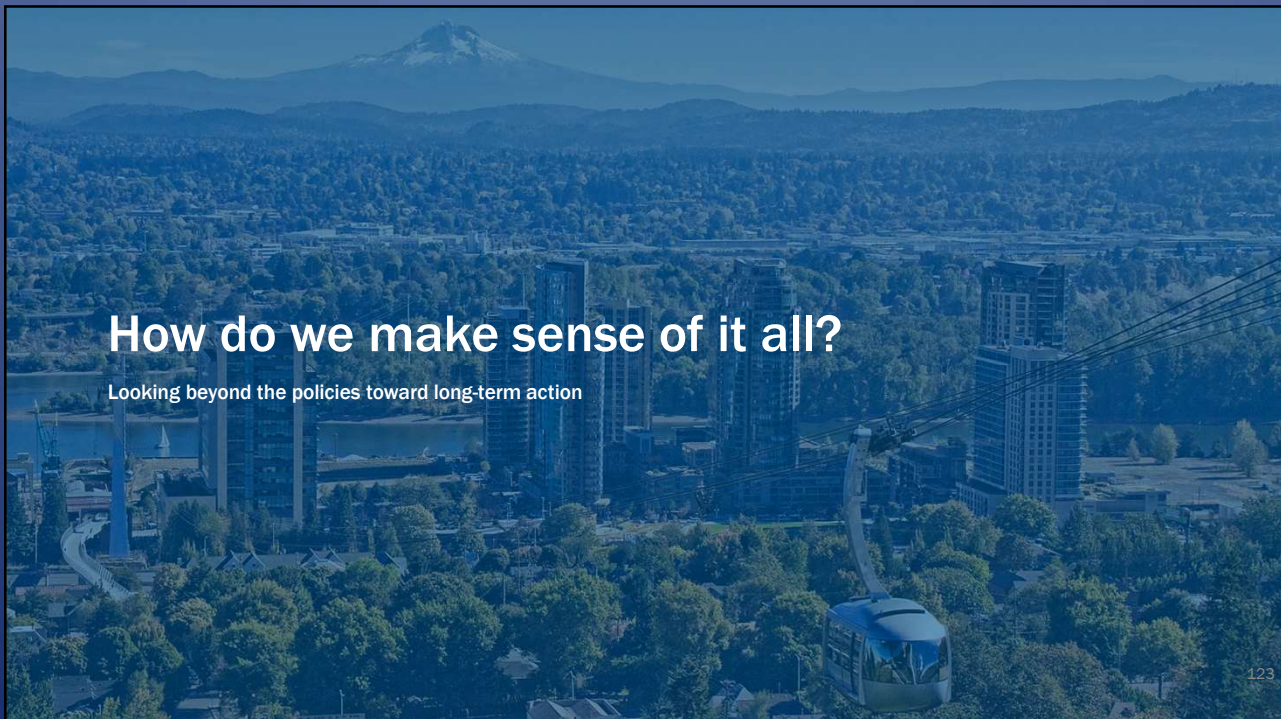




Know Your Role in the Process

- Connect with your emergency manager or FEMA Mitigation staff.
- Get involved early and stay involved.
- Use your engagement skills.
- Bring your knowledge of the built and natural environments.
- Contribute data, knowledge, and perspective.

122



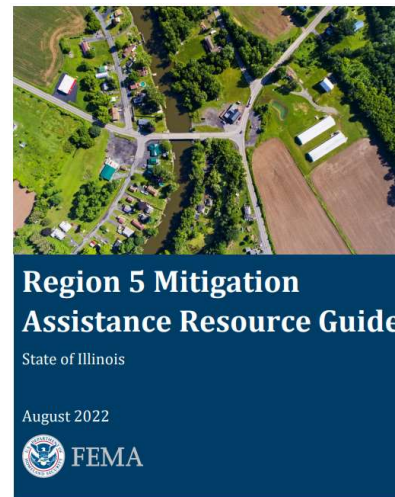
How do we make sense of it all?

Looking beyond the policies toward long-term action

123

MITIGATION ASSISTANCE RESOURCE GUIDE

- This new resource is coming soon!
- The guide will help pinpoint federal funding, technical assistance, and other resources to support hazard mitigation programs in Region 10.
- It will include information such as resource type, hazards addressed, type of mitigation, and eligibility requirements.
 - It will also flag if a resource is equity- or future conditions-focused.



Federal Emergency Management Agency

124

MITIGATION ASSISTANCE RESOURCE GUIDE

- We will use the Mitigation Assistance Resource Guide from Region 5 as an example as we develop.
- Each resource will include an example of a case study or best practice if there is one available.
- Can you think of any resources that we should include in the guide?
 - Please email Kayla Vackner:

kayla.vackner@associates.fema.dhs.gov



Disaster Supplemental Funding

Agency or Organization	U.S. Department of Commerce, U.S. Economic Development Administration (EDA)
Resource Type	Grant
Hazard(s) Addressed	Coastal Hazards; Drought; Earthquake; Flood; Extreme Heat; Soil/Geologic Hazards; Wildfire; Tornado; Severe Weather; Severe Winter Storms
Eligible Applicants	District Organization; Indian tribe or a consortium of Indian tribes; state, county, city, or other political subdivision of a state, including a special purpose unit of a state or local government engaged in economic or infrastructure development activities; or a consortium of political subdivisions; institution of higher education or a consortium of institutions of higher education; or public or private nonprofit organization or association acting in cooperation with officials of a political subdivision of a state.
Type of Assistance Provided	Financial Assistance
Restrictions	Proposed projects must serve areas where a Presidential declaration of a major disaster was issued under the Robert T. Stafford Disaster Relief and Emergency Assistance Act in 2017.
Funding Available	\$600 million was available in FY18 and FY19 respectively.
Cost Sharing	A match is required, but the percentage of the match is not identified.
Website	https://www.eda.gov/disaster-recovery/supplemental/
Contact Name	Jeanette Tamayo, Regional Administrator
Contact Address	231 South Dearborn Street Suite 3281 Chicago, IL 60605
Contact Phone	312-353-8144
Contact Email	jtamayo@eda.gov
Equity-Needed Resource?	No

About the Resource

In June 2019, Congress passed the Additional Supplemental Appropriations for Disaster Relief Act of 2019. The Act gives EDA \$600 million in extra Economic Adjustment Assistance (EAA) Program funds. The funds cover costs related to flood mitigation, disaster relief, long-term recovery, and the restoration of infrastructure. It affects areas impacted by Hurricanes Florence, Michael, and Lane; Typhoons Yutu and Manghut; wildfires and other disasters under the Stafford Act; and tornadoes and floods in 2019. This funding adds to EDA's Disaster Supplemental Funding for 2017 disasters.

Case Study or Best Practice

There is \$587 million available to grantees in communities impacted by 2017 natural disasters. More information on funding for the 2017 disasters can be found at: <https://www.eda.gov/disaster-recovery/supplemental/2017/>.

Federal Emergency Management Agency

125

Reach out to us:

Erin Cooper, Section Chief

Erin.Cooper@fema.dhs.gov

202-856-1927

Jenn Adleman, Alaska Planner

Jennifer.Adleman@fema.dhs.gov

202-664-0665