

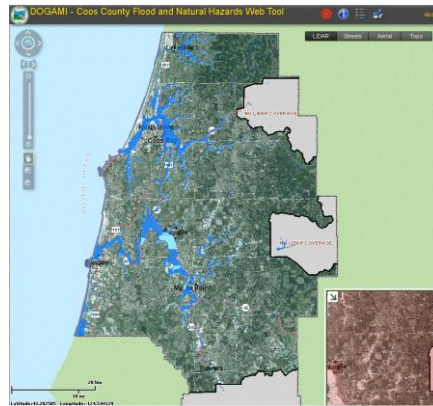
Inside this Issue

- 1 DOGAMI Web Tool
- 1 Planned Risk MAP Projects
- 2 WREG Software
- 2 WAHUG Meeting
- 3 NORFMA News
- 3 Mitigation Planning Handbook
- 3 Suggested Reading
- 3 Upcoming Events & Training

Strategic Alliance for Risk Reduction
FEMA Region X Service Center
20700 44th Avenue West, Suite 110
Lynnwood, Washington 98036
(425) 329-3699

News from Region X

Coos County Flood & Natural Hazards Tool



FEMA Region X contracted with the Oregon Department of Geology and Mineral Industries (DOGAMI) as a Cooperating Technical Partner in 2009 to revise the Flood Insurance Study for Coos County, Oregon. The revision was largely based on new, highly accurate LiDAR. While funded under Map Mod, DOGAMI was also asked to develop other non-regulatory hazard layers as pilot project to explore new avenues for the Risk MAP program. These include non-flood hazards, such as tsunami inundation, known landslides, seismic shaking, and channel migration. A “Changes Since Last FIRM” layer was also developed to highlight the improvement LiDAR introduced to flood zone mapping. To package and deliver this wealth of hazard information to communities, DOGAMI created the Coos County Flood and Natural Hazards web tool.

The tool can be found online at www.oregongeology.org/sub/fema-cooscountyhazards.

For more information, contact Jed Roberts, jed.roberts@dogami.state.or.us.

Ask the Help Desk!

Need information about a mapping project, mitigation planning, or NFIP regulations? Email your questions to RegionXHelpDesk@starr-team.com

Planned Risk MAP Projects for FY2012

Occasionally, FEMA receives inquiries regarding why a specific area receives funding for a project. There are three primary factors that come into play:

Program objectives—Congress and FEMA Headquarters establish program objectives that the Regions must attain. One example is updating coastal hazard data along populated reaches of the Nation’s coastlines. Additional objectives relate to targets that each Region must meet such as miles of riverine reaches studied or percent of population at risk.

Input from state partners—Each state has identified priorities based on considerations such as development pressure, outdated engineering and mapping, and environmental aspects.

Available data—Accurate terrain data such as high quality LiDAR have become essential for risk identification and hazard assessments. Additionally, study data developed or obtained by others including the USACE, local governments, and tribes may affect the prioritization of FEMA funds for incorporating the work into mapping updates.

The table on the next page is a list of potential projects the Region is considering for fiscal year 2012. Not all projects listed are expected to be funded due to budget limitations. In addition to the listed projects, Region X funds Risk MAP coordinators for each of the four states. Here are some highlights:

- The majority of proposed work addresses engineering and mapping needs to update coastal flood hazards.

Continued on next page

RiskMAP
Increasing Resilience Together

Projects (cont.)

- The plan fills the gap for many previously-started projects that lacked funding for additional risk assessments such as depth grids and increased coastal inundation areas (e.g. sea level rise).
- Watershed riverine studies focus on updating outdated engineering data and incorporating the results of USACE studies nearing completion.
- Grant proposals are part of a competitive process (initiated by the Region) with objectives to further advance mitigation activities above and beyond those already underway and to enhance the Region’s ability to raise risk awareness.

For more information about the project funding process, contact the Help Desk, regionxhelpdesk@starr-team.com.

USGS Releases New WREG Software

The United States Geological Survey (USGS) recently released a new program to develop Weighted-Multiple-Linear Regressions (WREG). The WREG program can be used to develop a regional estimation equation for streamflow characteristics that can be applied at an ungauged basin, or to improve the corresponding estimate at continuous-record streamflow gages with short records. The regional estimation equation results from a multiple-linear regression that relates observable basin characteristics, such as drainage area, to streamflow characteristics. WREG allows use of three approaches to estimating regression parameters: ordinary-least-squares (OLS), weighted-least-squares (WLS), and generalized-least-squares (GLS). All three approaches are based on the minimization of the sum of squares of differences between the gage values and the line or surface defined by the regression. WREG can also be used to test region of influence (RoI) regression models.

The software can be downloaded at water.usgs.gov/software/WREG.

Potential Studies, Risk Assessments, and Areas of Discovery to be Funded in 2012	
Project	State
Discovery	
Juneau Discovery and Risk Assessments	AK
Matanuska-Susitna Borough Discovery and Risk Assessments	AK
Clallam County Coastal Discovery and Risk Assessments	WA
Jefferson County Coastal Discovery and Risk Assessments	WA
Engineering, Study Production, and Risk Assessment Development	
Cordova Coastal Production and Risk Assessments	AK
Valdez Coastal Production and Risk Assessments	AK
Salish Sea Coastal Engineering (Surge Analysis)	WA
Island County Coastal Production and Risk Assessments	WA
Mason County Coastal Production and Risk Assessments	WA
Skagit County Coastal Production and Risk Assessments	WA
Whatcom County Coastal Production and Risk Assessments	WA
Deschutes Watershed Flood Study and Risk Assessments	WA
Lower Chehalis Flood Study and Risk Assessments	WA
Outreach and Additional Risk Assessment Development	
Idaho Alluvial Fan Risk Database: Upper Spokane, Clearwater, North Fork Payette, Big Wood, American Falls, Portneuf	ID
Upper Sandy River Channel Migration Zone Analysis	OR
Sandy River Restorative Flood Response Phase II	OR
Washington Coastal Hazard Coordination	WA
Washington Coastal Hazus Database	WA
Washington Web Portal for Risk Assessment Data	WA

View the full list of projects, including locations and details at www.starr-team.com

WAHUG Meeting

Attention All HAZUS Users

The Washington HAZUS User Group will be hosting a meeting in Lynnwood, Washington, on June 26. If you are a HAZUS user or would like to become one, you are encouraged to attend. The meeting is open to everyone within Region X as well as Canada. The agenda will include defining the WAHUG mission and goals, HAZUS overview presentations, and additional technical information.

For more information, contact Kelly Stone, Kelly.stone@fema.dhs.gov, (or visit www.usehazus.com/wahug).

The Region X Newsletter has a new home!

Looking for a past issue of the newsletter or need more information about an article? Subscription information, archives, links to tools and resources, and suggested reading material can be found on the Region X Newsletter page at www.starr-team.com.



NORFMA News

FEMA Quarterly Update

The Northwest Regional Floodplain Managers Association (NORFMA) continues to support improved dialog between FEMA Region X and the NFIP communities. The quarterly update meeting was an idea heavily supported by the NORFMA membership even when there is no news to share. The updates' objectives are fostering communication, learning what new policies or implementation FEMA is working with, and just generally getting to know the staff involved in the mapping process. FEMA hosted the first mapping update in March at their office in Lynnwood, Washington. The second update will be held in July via WebEx to reach communities in the most effective manner and reduce the need for travel.

For online meeting information, contact Hans Hunger, NORFMA Chair, hhunger@co.pierce.wa.us.

2012 Conference Call for Abstracts

NORFMA is excited to announce the Call for Abstracts for the upcoming conference in Spokane, Washington. The conference dates are September 19 - 21.

The Conference Committee is looking for abstract submittals on the following suggested (but not limited to) topics: Integrated, Innovative, Ecological Floodplain Management; Emerging Floodplain Management Regulations/Local Perspective and Responses; and Flood Hazard Management and Mitigation. Other tracks and topics of a similar nature are welcome as interesting case studies that illustrate these or related principals.

Presentations should be limited to 30 minutes in duration. Please submit your abstract (up to one page) to NORFMA via email to Deanna Griffith (Conference Chair), dgriffith@spokanevalley.org.

Abstracts are due by June 20, 2012. For more information and submission alternatives, visit www.norfma.org.

New Local Mitigation Planning Handbook Coming in June

FEMA is in the process of creating a handbook for local communities to use in writing and updating their hazard mitigation plans. In late June, a draft of the Local Mitigation Planning Handbook will be available for comment. If you are interested in providing input, please email RegionXHelpDesk@starr-team.com to be added to the distribution list or visit the Region X Workspace at www.starr-team.com.

Suggested Reading

Tsunami Evacuation: Lessons from the Great East Japan Earthquake and Tsunami of March 11, 2011

A comprehensive approach to community resilience will include consistent planning, active preparation, and systematic risk reduction efforts. This report documents what occurred in Japan in March 2011. It describes how building codes, effective communication, accurate mapping, and consistent community engagement in the hazard planning process, etc., interacted and influenced the final outcome. It also contains remarkable stories of lessons learned, key successes, and avoidable tragedies that coastal residents of Washington can apply to help increase resilience.

Download the publication from the STARR Region X workspace at www.starr-team.com. 

Upcoming Events & Training

(All times Pacific)

Elevation Certificates in A Zones

June 14, 10:00 am - 12:30 pm
Online* - 2 CECs

Washington HAZUS User Group Meeting

June 26, 2012 9:00 am - 3:00 pm
Lynnwood, WA
Kelly.stone@fema.dhs.gov

NORMA/FEMA Quarterly Update

July 2, 1:30 pm - 3:00 pm
Online
rsxc@starr-team.com

Elevation Certificates

July 18, 10:00 am - 12:30 pm
Online* - 2 CECs

Determining BFE

July 19, 10:00 am - 12:30 pm
Online* - 1 CEC

Local Mitigation Planning Handbook Overview

July - TBD
Online* - 1 CEC

NORFMA Idaho Mini-Conference

August 2-3, 2012
Boise, ID
www.norfma.org

MT-1 Form Basics

August 16, 10:00 am - 11:00 am
Online* - 1 CEC

NORFMA 2012 Conference

September 19-21, 2012
Spokane, WA
www.norfma.org

*To register for online courses, visit STARR's training site online at j.mp/starrtraining, or email RXTraining@starr-team.com.

RiskMAP

Increasing Resilience Together