

**FEMA REGION X
RISK MAP DISCOVERY INTERVIEW
WASCO COUNTY, OREGON
June 26, 2015 2:30 PM PST**

Participants

Wasco County

- Angie Brewer, Planning Director
- Tycho Granville, GIS Coordinator

STARR (FEMA Contractor)

- Joshua Crowley, Regional Service Center (RSC) (host)
- Adam Pooler, GIS Lead/Senior GIS Analyst
- Andy Dobson, Senior Planner

FEMA Region IX

- Ed Curtis
- Michael Bishop

Discussion

Joshua Crowley made introductions and presented an overview of the Risk MAP program and the different projects and products that can benefit communities. Our overall goal is discovering how FEMA can help Wasco County become a more hazard and disaster-resilient community. A copy of the presentation is included with these meeting notes as Appendix A.

Pre-Discovery meetings and interviews with communities within the Middle Columbia-Hood Watershed have been scheduled throughout June and July, 2015. Discovery Meetings are scheduled the week of July 20, 2015.

The following information was collected during the interview. Unless otherwise noted, all comments are from Wasco County representatives.

Community Contacts

- Angie Brewer and Tycho Granville's contact information was updated in the contact database
- Kristy Beechamp, Emergency Manager was added to database

Fact Sheets and Discovery Mapping

The draft Discovery Map illustrates a variety of geographic data from state, national, and (when possible) local sources. These include basic geologic and geographic features, jurisdiction boundaries, hazard locations, critical facilities, floodplain data, infrastructure, aerial images, and environmentally

sensitive areas. One reason for this interview is to review and refine the draft Discovery Map before the in-person Discovery Meeting with the community.

- A recent mapping/survey project collecting LiDAR data across north half of the county was mentioned by Tycho
- Tycho is GIS coordinator for Wasco County and provides GIS Services to Sherman County on a contract basis—has been mentioned in other community interviews as a valuable resource for information
- Columbia River Gorge National Scenic Area is an important dataset to add, and will be updated on Discovery Map
- Various other datasets available through County that Adam and Tycho will discuss later

Planning

- Valued areas of the community include:
 - Pine Hollow Reservoir and Rock Creek Reservoir: man-made lakes with surrounding residential and recreation development, water used for agricultural irrigation
 - National Scenic Areas—overlay across the county with various regulations and requirements from Federal government
- The most recent Hazard Mitigation Plan was completed in 2012 (we need an updated copy). Both Angie and Tycho were on the Hazard Mitigation Plan committee and are actively involved in administering it
- A recent project is under review to increase rail tracks in Mosier area—would greatly increase the number of trains able to pass through county. This raises a concern about the amount of hazardous materials potentially passing through communities (oil, coal)

Earthquake Hazard

- Historic fault lines crisscross the area and are illustrated on Discovery Map, but there is no active hazard. Earthquakes are mentioned in most recent HMP

Wildfire Hazard

- There is a high risk and level of concern
- Vulnerable locations include:
 - Priority areas called out in Wildfire Protection Plan (plan is due for update, although schedule has not been established yet)
 - Heavy fuel areas within national forests
 - Private properties without adequate defensible space
 - Large agricultural areas—rolling wheat/grass fields
 - Rail corridors—coal and oil trains
 - Areas outside fire protection service radius—southeastern quadrant of the county is entirely un-serviced, and any fire that starts there will burn until fuel runs out
 - Rowena mentioned—fire last year required evacuations, complex topography made getting people out and firefighters in difficult (area marked on Discovery Map)

**FEMA REGION X
RISK MAP DISCOVERY INTERVIEW
WASCO COUNTY, OREGON**

- Concern was discussed about how to evacuate hikers, campers, and mountain bikers out in forested recreation areas—nobody knows who is out there at any given time, have to send firefighters out on foot to search and evacuate
- Mitigation projects or initiatives in Wasco county include:
 - Close coordination between emergency services and county GIS for evacuation routes, population centers, communication
 - Fire safety ordinance applies to all construction permits countywide—this has been in place since 2007

Landslide Hazard

- Topography and geology across the County makes landslides and rock falls a regular occurrence
- Vulnerable locations include the I-84 corridor where blasted walls from highway construction occasionally collapse (ODOT has good data on where this is likely to happen)
- A Geologic Hazard Overlay Zone through DOGAMI was also mentioned—unknown how accurate or recent this data is
- Development regulations are in place for steeply-sloped areas—mandate for geotechnical study prior to construction

Severe Storm Hazard

- Most winters at least one severe storm comes through that requires hazard/emergency services
- Vulnerable locations include the entire Columbia Gorge and I-84 (which was once closed for four days, severely impacting transportation throughout the county)

Emergency Communications

- Everbridge System mentioned during wildfire discussion, interacts with 9-1-1 system. Kristy was mentioned as the person best able to answer questions during in-person Discovery Meetings
- Concern/need for better communication with people in wilderness areas for recreation as mentioned earlier

Flood Hazard

- Flooding is the number one concern in current hazard mitigation plan
- Tremendous inaccuracies in floodplain mapping makes it unusable—conditions have changed too much and original studies were not detailed enough
- The County planning department fields many questions from community about floodplain mapping and flood hazard on individual properties
- Tygh Valley area south of Pine Hollow Reservoir mentioned specifically and located on map—increasing development pressure/desire for new home construction means every property owner needs specific survey of property to determine potential flood hazard. New mapping would make administering construction permits much simpler and more efficient

**FEMA REGION X
RISK MAP DISCOVERY INTERVIEW
WASCO COUNTY, OREGON**

- Josha discussed Regional Service Center availability to help communities and homeowners in the area—various services and personnel ready to assist

Levees

- Levees illustrated on Discovery Map are either railroad tracks or USACE maintained

Communications and Outreach

- Current community outreach/engagement uses County Facebook page and website. 105.5/96.9/bilingual radio station is also available
- Two prominent environmental organizations: River Keepers (all local waterways) and Friends of the Columbia Gorge (specific to national scenic area)

Compliance and Training

- Could use more materials for education/outreach about various flood hazards
- Extended discussion regarding elevation certificates, letters of map amendment, and other administrative support that Region X can provide—need for coordination going forward as overall FIRM study is undertaken—LOMA process can fill in meantime to get more accurate information out

Next Steps

- July 21 and the morning of July 22 will work best for Wasco County representatives for the Discovery Meeting. STARR will continue to coordinate on specific meeting dates, times, and locations

Appendix A: Interview Presentation



FEMA

Risk MAP Discovery

Middle Columbia-Hood Watershed

Information Exchange Sessions
June 2015

RiskMAP
Increasing Resilience Together



Information Exchange Agenda

- **Overview of Risk MAP and Discovery**
- **Introduction to Enhanced Risk MAP Products**
- **Interactive Questionnaire**
- **Close**

The Vision for Risk MAP

Through collaboration with State, Local, and Tribal entities, Risk MAP will deliver quality data that increases public awareness and leads to action that reduces risk to life and property



RiskMAP

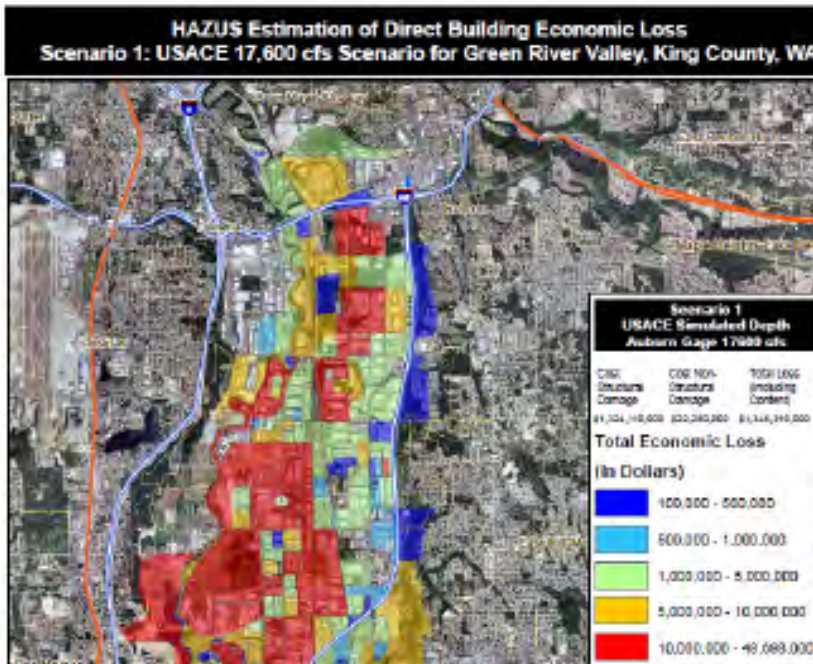
Increasing Resilience Together

- Collaborative approach
- Goals: quality data, public awareness, action that reduces risk
- Watershed-oriented
- Multi-Hazard
- Focus on up-front coordination
- Discovery is mandatory

Risk MAP Products

Multi-Frequency Depth & Water-Surface Elevation (WSE) Grids

10%, 2%, 1%, 0.5%, 0.2% annual chance profiles



Inundation

- 3 feet or less
- 3 to 6 feet
- 6 feet +

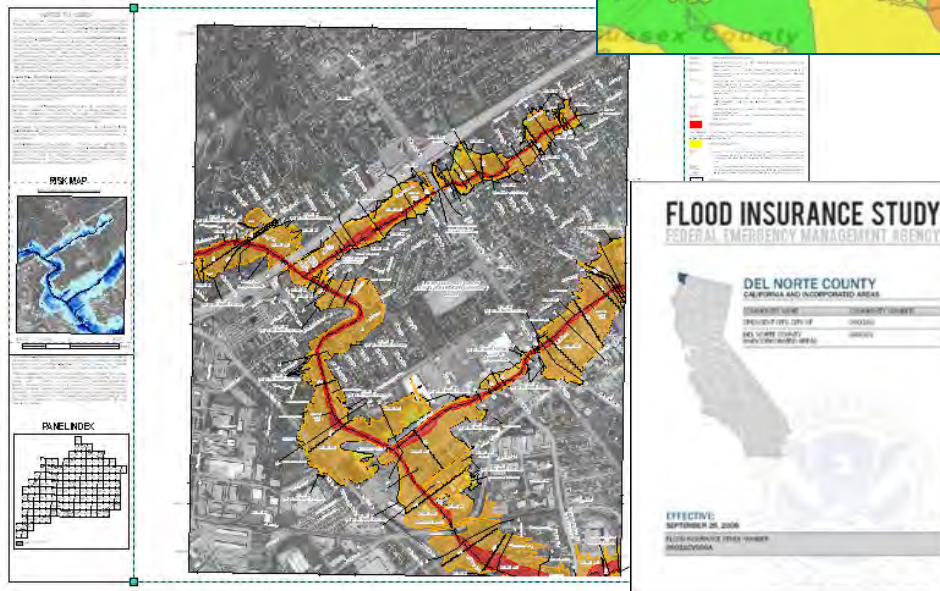
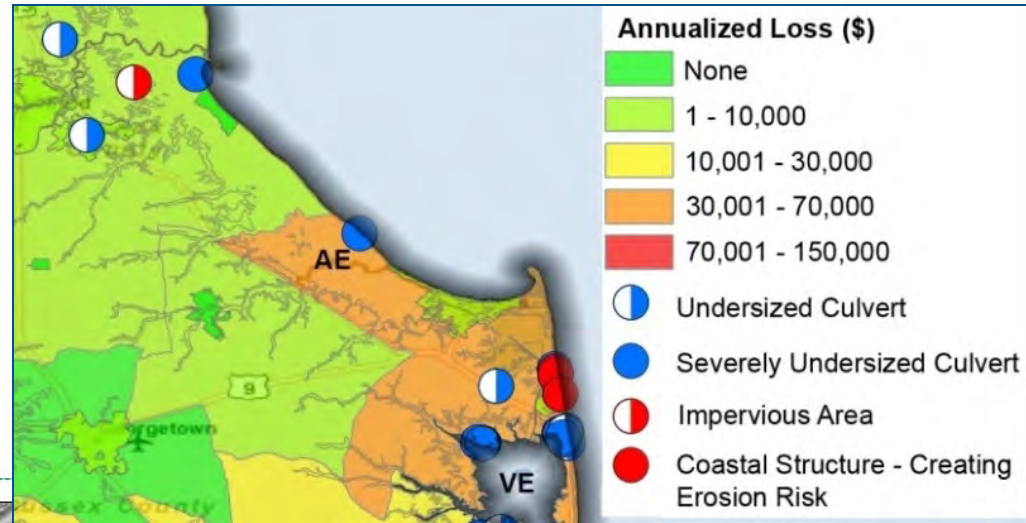
HAZUS Risk Assessment & National Flood Risk Layer

Enables communities to understand risk by reference to existing structure loss

Risk MAP Products

Contributing Hazard Factors

Highlights areas of concern identified throughout project



FIS Reports and DFIRM Maps

DFIRM and FIS will continue to fulfill regulatory requirements and support the NFIP

Discovery

Discovery is the process of data collection and analysis with the goal of initiating a hazard risk or mitigation project and risk discussions within the watershed

When:

- After an area/watershed has been prioritized
- Before a Risk MAP project is scoped or funded

Required for new and updated...

- Flood studies
- Flood risk assessments
- Mitigation planning technical assistance projects

Why:

- Increases visibility of flood risk information, education, involvement
- Helps inform whether a Risk MAP project will occur in the watershed



Middle Columbia-Hood Discovery

- **Federal and State Data Collection**
- **Local Issues: Identify Risk MAP Needs**
 - Need support with mitigation planning?
 - Need mitigation projects?
 - Need new flood study data?
 - Need training on floodplain management?
 - Need support developing a hazard risk outreach program?
 - What else can FEMA do to help your community become resilient?
- **Pre-Discovery Interviews: June 2015**
- **Discovery Meetings: Week of July 20-24, 2015**
- **Risk MAP Project(s) Identified**
- **Possible FEMA Funding Allocated for Risk MAP Project**

Discovery Interview

- **Local Contacts**
- **Data**
 - LiDAR
 - Local or Regional GIS Data
- **Mitigation Planning**
 - Desired Mitigation Projects
- **Local Hazards**
 - Earthquakes
 - Wildfires
 - Landslides
 - Severe Storms
 - Flooding
- **Levees**
- **Environmentally Sensitive Areas**
- **Communications and Outreach**
- **Compliance and Training**

Mitigation Planning		
How would you describe your level of involvement with the development of the mitigation plan? (Considerable, Moderate, Minimal)	Do you need assistance with mitigation planning in your community? (Yes, No, Possibly)	Mitigation Planning Comments, Explanations, Questions

Questions?

FEMA

- **Amanda Siok, Risk Analyst, amanda.siok@fema.dhs.gov**
- **Brett Holt, Mitigation Planner, brett.holt@fema.dhs.gov**
- **David Ratté, Regional Engineer, david.ratte@fema.dhs.gov**

OREGON

- **Steve Lucker, State Risk MAP Coordinator, stephen.lucker@state.or.us**
- **Christine Shirley, State NFIP Coordinator, christine.shirley@state.or.us**

STARR

- **Emily Whitehead, emily.whitehead@starr-team.com**
- **Adam Pooler, adam.pooler@starr-team.com**
- **Becca Fricke-Croft, becca.croft@starr-team.com**
- **Joshua Crowley, joshua.crowley@starr-team.com**

Resilience Action Partners

- **Kathleen Warren, kathleen.warren@mbakerintl.com**