

**FEMA REGION X
RISK MAP DISCOVERY INTERVIEW
CITY OF THE DALLES, OREGON
June 25, 2015 10:00 AM PST**

Participants

The Dalles

- Richard Gassman, City Planning Director
- Dawn Hurt, Senior City Planner

FEMA Region X

- David Ratte, Regional Engineer

State of Oregon

- Steve Lucker, Floodplain/Natural Hazards Mapping Specialist

STARR (FEMA Contractor)

- Josha Crowley, Regional Service Center (RSC) (host)
- Adam Pooler, GIS Lead/Senior GIS Analyst
- Andy Dobson, Senior Planner

Discussion

Josha Crowley made introductions and presented an overview of the Risk MAP program and the different projects and products that can benefit communities. Our overall goal is discovering how FEMA can help The Dalles become a more hazard and disaster-resilient community. A copy of the presentation is included with these meeting notes as Appendix A.

Pre-Discovery meetings and interviews with communities within the Middle Columbia-Hood have been scheduled throughout June and July, 2015. Discovery Meetings are tentatively scheduled the week of July 20, 2015.

The following information was collected during the interview. Unless otherwise noted, all comments are from The Dalles representatives.

Community Contacts

- Confirmed Jo Kemper is The Dalles new floodplain administrator
- Updating phone number direct extensions for all personnel
- Nick Kraemer is contract city planner—he works for several small communities in area and for The Dalles part-time
- Dave Anderson, The Dalles Public Works Director added to list

Fact Sheets and Discovery Mapping

The draft Discovery Map illustrates a variety of geographic data from state, national, and (when possible) local sources. These include basic geologic and geographic features, jurisdiction boundaries, hazard locations, critical facilities, floodplain data, infrastructure, aerial images, and environmentally sensitive areas. One reason for this interview is to review and refine the draft Discovery Map before the in-person Discovery Meeting with the community.

- Wasco County administers an interactive online GIS service that is shared between The Dalles and County
- Tycho Granville is the Wasco County GIS coordinator and should be contacted for additional data

Planning

- The Dalles has been involved in Wasco County hazard mitigation plan and have a city-specific plan which needs updating—this is an active project
- Top hazard mitigation priorities mentioned are freight trains and the potential for spills or fires from hazardous cargo. This is not a pressing concern, but something they're aware of

Earthquake Hazard

- There are nearby fault lines associated with Mt. Hood, no earthquake hazards or recent events noted
- Vulnerable locations discussed include the West Sixth Street Bridge, however this structure was recently rebuilt and upgraded to resist tremors. There were not any concerns about other bridges in the city

Wildfire Hazard

- Drought declared in Wasco County, combined with steady Columbia River winds makes for dangerous fire conditions. Recent fires already indicated on Discovery Map and new area of concern highlighted on map to the northwest outside city limits
- There was discussion about Government Flats fire and how burned areas might affect drinking water recharge areas. As it turns out, concern was misplaced and areas have been reseeded and are growing well
- Mitigation projects or initiatives include the Watonka Campus which was discussed as staging site for firefighters coming in from around the state when necessary to deal with nearby fires

Landslide Hazard

- Rockfall hazard discussed in some areas around the city, recent rock fall in 2010/2011.
- Extremely slow-moving landslides identified around The Dalles in between geologic rock layers. De-watering wells established to greatly reduce movement in this area (GIS mapping of these areas available and The Dalles will send to STARR)

Severe Storm Hazard

- Severe storms are an annual concern, every three or four years a notable ice storm impacts city. Topography of city combined with high winds makes ice storms very serious
- Blackouts are not a major concern—outages only up to an hour mentioned. Power plants are nearby and utilities are able to get service back online quickly
- Some sheltering took place during most recent wildfire events—a number of residents were displaced until it could be brought under control
- Grade school and middle school used both for residents and for staging areas for response personnel
- The Dalles operates with a regional emergency communication/preparedness consortium

Emergency Communications

- The Dalles is part of emergency preparedness network (9-1-1, Wasco County, State agencies), most emergency communications handled through Wasco County

Flood Hazard

- Risk level
 - There are not a lot of flooding concerns other than Mill Creek and Lone Pine locations mentioned below. The Columbia River controlled by USACE dam operations
- Q3 data is what we have available and illustrated on the Discovery Map. The most recent FIS dates from 1984
- Three Mile Creek and Dry Hollow Creek both do not convey any water
- Mill Creek confluence with Columbia has been filled over, piped to river. Occasional flooding at Hwy 30 area, culvert leading underground can't handle flow from Mill Creek which backs up and floods downtown areas
 - City needs assistance in dealing with this problem—both studying and analysis and what physical projects need to take place. This situation is complicated by proximity of highway and railroad lines
- Lone Pine east side of city, new development requires floodplain insurance when in fact they are not within a physical flood hazard area—need for restudy or LOMA/certificate of elevation
- Columbia River levels are controlled by Corps of Engineers—FIS data does not reflect reality of water flow and flood elevations and re-delineation may be necessary to remove property owners from floodplain
- Areas along Mill Creek highlighted on Discovery Map including stream bank restoration, levee structures, flood control structures
- The question was asked if flooding damage costs were ever calculated. The City said that the Public Works Director could have more information related to these costs. They could provide general information as to the location/extent of the flooding.

**FEMA REGION X
RISK MAP DISCOVERY INTERVIEW
THE DALLES, OREGON**

Levees

- The only levee shown on Discovery Map is large concrete floodwall along Mill Creek near confluence with Columbia River that runs parallel to US 30/Third Street
- Another levee identified along Columbia River—integral to highway I-84 roadbed, protected area indicated on FIRM, state may have inspection/certification reports on this structure, what the status is, who is in charge of it
- Documentation
 - Largest levee along Columbia River may be incorporated into Interstate Highway, may not be obvious that it is providing flood protection

Environmentally Sensitive Areas

- Riparian protection areas and local regulations established along Mill Creek and other local waterways
- Some identified wetland areas within industrial developments, recent Wal-Mart project has uncovered some areas near I-84 interchange near Chenoweth Creek (indicated on Discovery Map)

Communications and Outreach

- Current community outreach/engagement tools include a standard community website, and a Facebook page
- The Dalles is interested in seeing what resources for outreach, communication, and hazard education FEMA can offer—will bring to Discovery Meeting and talk with community officials
- The Dalles also interested in training opportunities available through Region X—Joshua discussed the many options that are available. He also mentioned a monthly newsletter with various resources and education opportunities.
- The City is also concerned about the amount of rail traffic that moves through the City, potentially 28 trains per day.

Next Steps

STARR will continue coordinating with The Dalles on the upcoming dates, times, and locations for the Discovery Meetings later in July.

Appendix A: Interview Presentation



FEMA

Risk MAP Discovery

Middle Columbia-Hood Watershed

Information Exchange Sessions
June 2015

RiskMAP
Increasing Resilience Together



Information Exchange Agenda

- **Overview of Risk MAP and Discovery**
- **Introduction to Enhanced Risk MAP Products**
- **Interactive Questionnaire**
- **Close**

The Vision for Risk MAP

Through collaboration with State, Local, and Tribal entities, Risk MAP will deliver quality data that increases public awareness and leads to action that reduces risk to life and property



RiskMAP

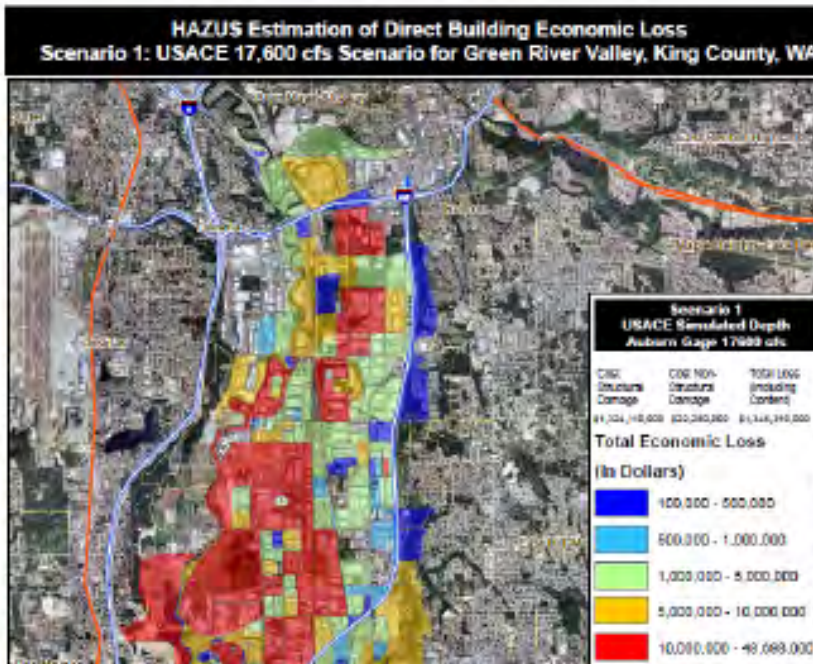
Increasing Resilience Together

- Collaborative approach
- Goals: quality data, public awareness, action that reduces risk
- Watershed-oriented
- Multi-Hazard
- Focus on up-front coordination
- Discovery is mandatory

Risk MAP Products

Multi-Frequency Depth & Water-Surface Elevation (WSE) Grids

10%, 2%, 1%, 0.5%, 0.2% annual chance profiles



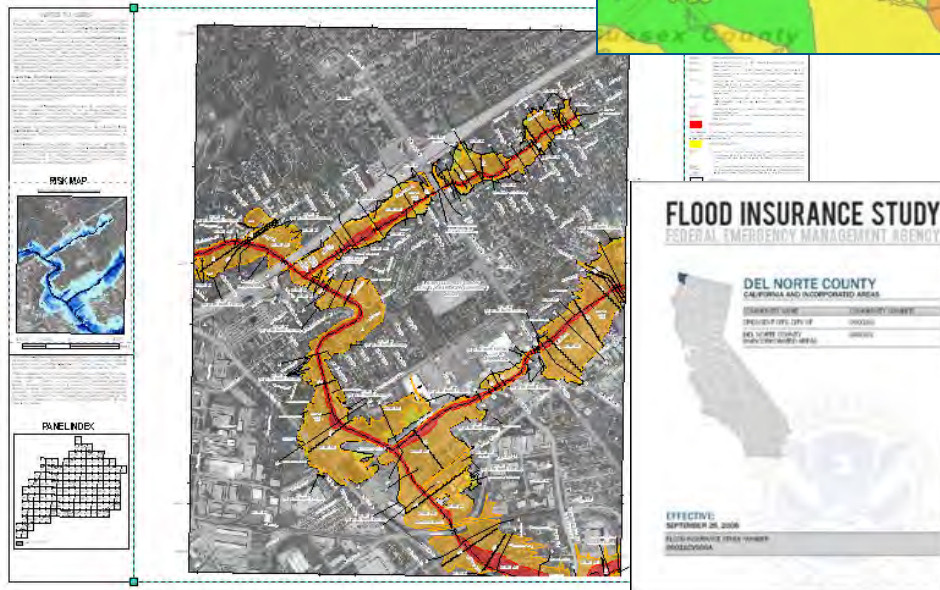
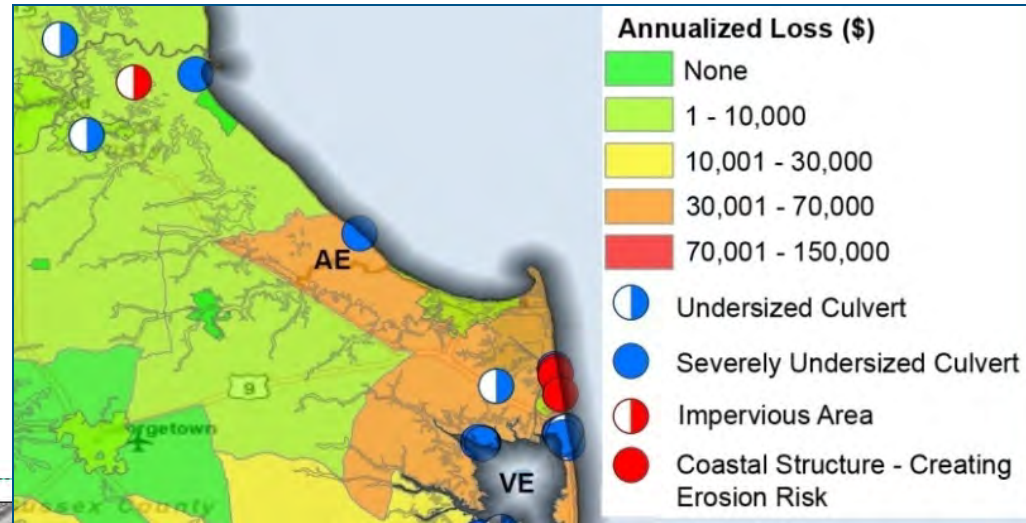
HAZUS Risk Assessment & National Flood Risk Layer

Enables communities to understand risk by reference to existing structure loss

Risk MAP Products

Contributing Hazard Factors

Highlights areas of concern identified throughout project



FIS Reports and DFIRM Maps

DFIRM and FIS will continue to fulfill regulatory requirements and support the NFIP

Discovery

Discovery is the process of data collection and analysis with the goal of initiating a hazard risk or mitigation project and risk discussions within the watershed

When:

- After an area/watershed has been prioritized
- Before a Risk MAP project is scoped or funded

Required for new and updated...

- Flood studies
- Flood risk assessments
- Mitigation planning technical assistance projects

Why:

- Increases visibility of flood risk information, education, involvement
- Helps inform whether a Risk MAP project will occur in the watershed



Middle Columbia-Hood Discovery

- **Federal and State Data Collection**
- **Local Issues: Identify Risk MAP Needs**
 - Need support with mitigation planning?
 - Need mitigation projects?
 - Need new flood study data?
 - Need training on floodplain management?
 - Need support developing a hazard risk outreach program?
 - What else can FEMA do to help your community become resilient?
- **Pre-Discovery Interviews: June 2015**
- **Discovery Meetings: Week of July 20-24, 2015**
- **Risk MAP Project(s) Identified**
- **Possible FEMA Funding Allocated for Risk MAP Project**

Discovery Interview

- **Local Contacts**
- **Data**
 - LiDAR
 - Local or Regional GIS Data
- **Mitigation Planning**
 - Desired Mitigation Projects
- **Local Hazards**
 - Earthquakes
 - Wildfires
 - Landslides
 - Severe Storms
 - Flooding
- **Levees**
- **Environmentally Sensitive Areas**
- **Communications and Outreach**
- **Compliance and Training**

Mitigation Planning		
How would you describe your level of involvement with the development of the mitigation plan? (Considerable, Moderate, Minimal)	Do you need assistance with mitigation planning in your community? (Yes, No, Possibly)	Mitigation Planning Comments, Explanations, Questions

Questions?

FEMA

- **Amanda Siok, Risk Analyst, amanda.siok@fema.dhs.gov**
- **Brett Holt, Mitigation Planner, brett.holt@fema.dhs.gov**
- **David Ratté, Regional Engineer, david.ratte@fema.dhs.gov**

OREGON

- **Steve Lucker, State Risk MAP Coordinator, stephen.lucker@state.or.us**
- **Christine Shirley, State NFIP Coordinator, christine.shirley@state.or.us**

STARR

- **Emily Whitehead, emily.whitehead@starr-team.com**
- **Adam Pooler, adam.pooler@starr-team.com**
- **Becca Fricke-Croft, becca.croft@starr-team.com**
- **Joshua Crowley, joshua.crowley@starr-team.com**

Resilience Action Partners

- **Kathleen Warren, kathleen.warren@mbakerintl.com**