

**FEMA REGION X
RISK MAP DISCOVERY INTERVIEW
RUFUS, OREGON
June 25, 2015 8:30 AM PST**

Participants

City of Rufus

- Jaclyn McCurdy, Rufus City Administrator

State of Oregon

- Steve Lucker, Floodplain/Natural Hazards Mapping Specialist

FEMA Region X

- David Ratte, Regional Engineer

Resilience Action Partners (RAP)

- Kathleen Warren, Region X CERC Lead

STARR (FEMA Contractor)

- Josha Crowley, Regional Service Center (RSC) (host)
- Adam Pooler, GIS Lead/Senior GIS Analyst
- Andy Dobson, Senior Planner

Discussion

Josha Crowley made introductions and presented an overview of the Risk MAP program and the different projects and products that can benefit communities. Our overall goal is discovering how FEMA can help Rufus become a more hazard and disaster-resilient community. A copy of the presentation is included with these meeting notes as Appendix A.

Pre-Discovery meetings and interviews with communities within the Middle Columbia-Hood Watershed have been scheduled throughout June and July 2015. Discovery Meetings are scheduled the week of July 20, 2015.

The following information was collected during the interview. Unless otherwise noted, all comments are from Rufus representatives.

Community Contacts

- Jaclyn confirmed that she is the main community contact, replacing one or two others that were in our database, meeting room is available within the City of Rufus.

Fact Sheets and Discovery Mapping

The draft Discovery Map illustrates a variety of geographic data from state, national, and (when possible) local sources. These include basic geologic and geographic features, jurisdiction boundaries, hazard locations, critical facilities, floodplain data, infrastructure, aerial images, and environmentally sensitive areas. One reason for this interview is to review and refine the draft Discovery Map before the in-person Discovery Meeting with the community.

- Stream names listed and located: Gerkin Canyon, China Hollow, some flooding concerns along these both from inland water flow and backflow up Columbia River
- Rufus is a very small community and the Discovery Map illustrates almost everything important. During discussion we added water towers and well fields, and Giles French Park on the east side of town along the Columbia River
- GIS services provided by Wasco County for both Sherman County and Rufus. Jacklyn is very savvy with GIS technology, but they don't have the infrastructure in place to provide a local service
- Sherman County Assessor's office may have some additional local experience with mapping (Brian Strabley mentioned as contact with Assessor's Office)

Planning

- Status of FEMA Hazard Mitigation Planning projects
- Rufus coordinates with Sherman County on the most recent hazard mitigation plan. Jacklyn has been part of the process writing the current plan, but did not add specific mitigation needs for the city.
- A recent wildfire event resulted in confusion about Rufus' evacuation process
- Top hazard mitigation priorities include wildfire, winter storms, and oil and coal trains travelling along local freight lines
- Status of evacuation, response, and recovery planning
- If it is needed during an emergency, City hall is the community designated shelter/coordination center

Earthquake Hazard

- No concerns, similar risk level associated with Mt. Hood as the rest of Sherman County—inactive fault lines splintering throughout the county

Wildfire Hazard

- Wildfire hazard is a huge concern for community
- Fire a few weeks ago, concern that town would need to be evacuated—fire started in Biggs and extended to Rufus city limits southwest side of town
- High winds pushed recent Biggs fire, caused heavy smoke over city
- Vulnerable locations are located outside city limits, both upstream and downstream along Columbia River, and drylands and cliff heights south of city

**FEMA REGION X
RISK MAP DISCOVERY INTERVIEW
RUFUS, OREGON**

- Railroad ties catch fire along tracks at least once a year, tracks coming into town from west

Landslide Hazard

- No problems mentioned, although there is a steep cliff immediately south of town. Some areas near Biggs Junction.

Severe Storm Hazard

- Winter ice storms very routine in Columbia Gorge, impact on highway and road travel happens every winter. Heavy windstorms sweep up Columbia River regularly
- Blackouts occur regularly during storm events. Because there are two utilities in town (Pacific Power, Wasco Electric) some overlapping service means service in part of town can be down and another isn't
- Emergency shelters are not normally necessary. There is concern for resident safety during some storms and extended blackouts, depending on what utility a house is on. One Red Cross-identified emergency shelter in Rufus indicated on map

Emergency Communications

- Siren system exists, but unknown if it is functioning (run by fire department)
- New phone system has capability to provide pre-recordings for emergency information or updates to residents calling in—not set up for this yet according to Jaclyn

Flood Hazard

- There is no flood risk from the Columbia River—levels are controlled entirely by dam
- The China Hollow flood mentioned (1964) as a big event that wiped out houses and other structures
- Illustrated floodplain seems accurate to Jaclyn, no comments or concerns even though it is old Q3 mapping—residents haven't been complaining and there are only two flood insurance policies in effect (according to FEMA records)
- Indicated floodplain does not follow topography, although streams have run over their banks in the past (China Hollow flood mentioned specifically)
- There was a culvert replacement this year upstream on China Hollow to improve flow and reduce debris backups

Environmentally Sensitive Areas

- Scenic shoreline areas already under Columbia River protections
- WWTP location also indicated on map

Communications and Outreach

- Current community outreach/engagement efforts include a countywide monthly newsletter (email) run by volunteer, a Rufus Facebook page, and website

**FEMA REGION X
RISK MAP DISCOVERY INTERVIEW
RUFUS, OREGON**

- The new City phone system offers option of direct dial-in to message postings, alerts and updates—haven't taken advantage of this capability yet
- Kathleen asked for Jaclyn to think about key players in local media or communications and outreach, and invite them if possible to the Discovery Meeting later in July
- Josha ran through some of the materials for communications and outreach that will be available at Discovery Meeting, Rufus interested in learning more about these resources

Next Steps

- STARR will continue coordinating with Rufus on specific dates, times, and locations for upcoming Discovery meetings the week of July 20, 2015

Appendix A: Interview Presentation



FEMA

Risk MAP Discovery

Middle Columbia-Hood Watershed

Information Exchange Sessions
June 2015

RiskMAP
Increasing Resilience Together



Information Exchange Agenda

- **Overview of Risk MAP and Discovery**
- **Introduction to Enhanced Risk MAP Products**
- **Interactive Questionnaire**
- **Close**

The Vision for Risk MAP

Through collaboration with State, Local, and Tribal entities, Risk MAP will deliver quality data that increases public awareness and leads to action that reduces risk to life and property



RiskMAP

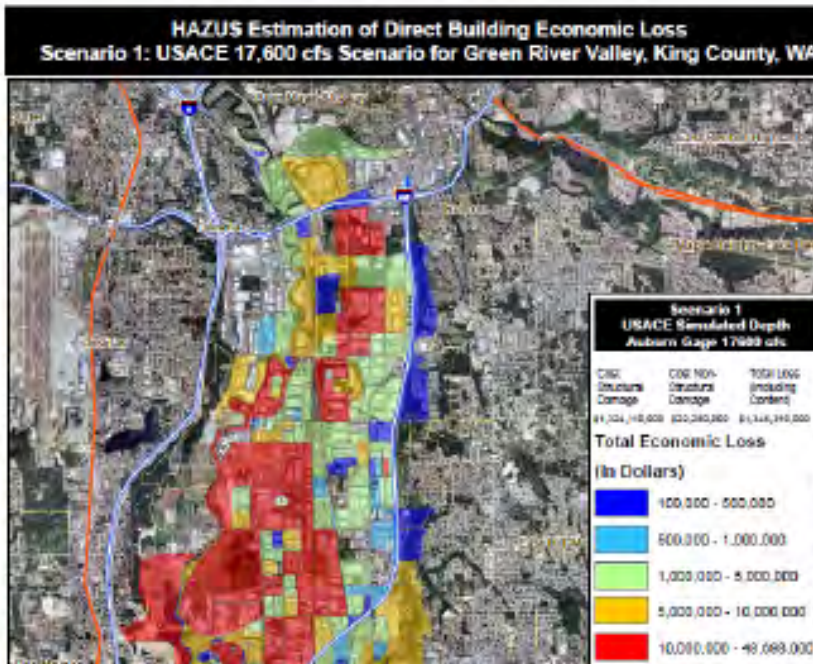
Increasing Resilience Together

- Collaborative approach
- Goals: quality data, public awareness, action that reduces risk
- Watershed-oriented
- Multi-Hazard
- Focus on up-front coordination
- Discovery is mandatory

Risk MAP Products

Multi-Frequency Depth & Water-Surface Elevation (WSE) Grids

10%, 2%, 1%, 0.5%, 0.2% annual chance profiles



Inundation

- 3 feet or less
- 3 to 6 feet
- 6 feet +

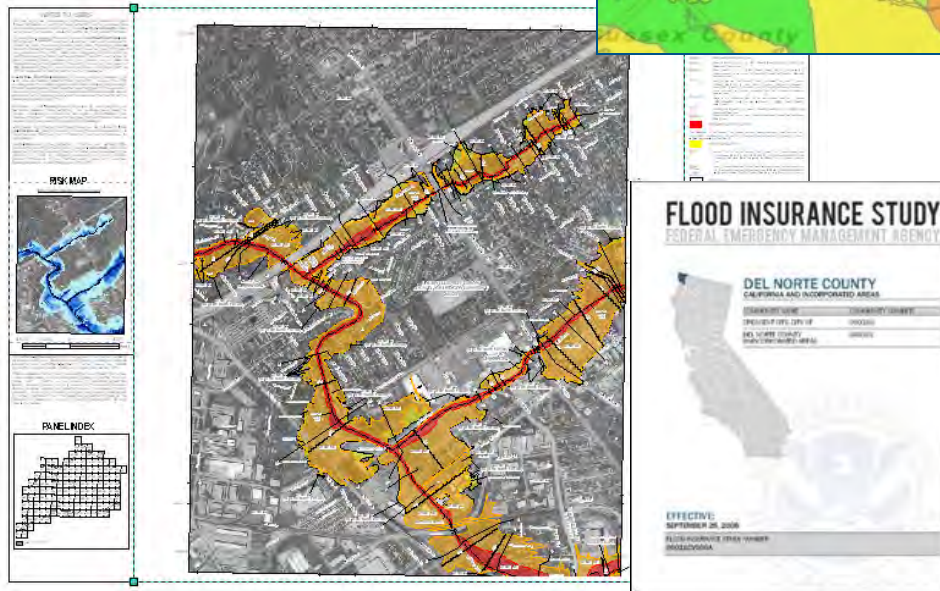
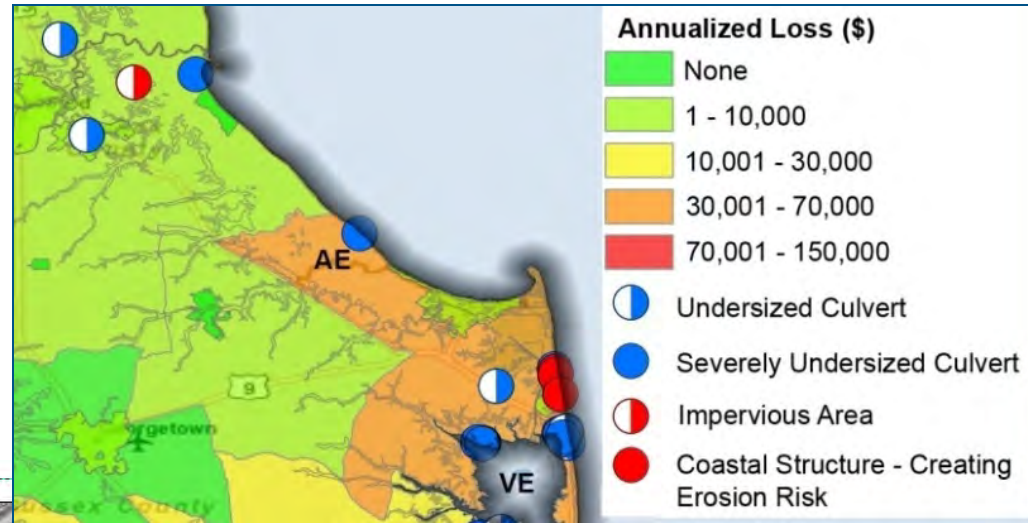
HAZUS Risk Assessment & National Flood Risk Layer

Enables communities to understand risk by reference to existing structure loss

Risk MAP Products

Contributing Hazard Factors

Highlights areas of concern identified throughout project



FIS Reports and DFIRM Maps

DFIRM and FIS will continue to fulfill regulatory requirements and support the NFIP

Discovery

Discovery is the process of data collection and analysis with the goal of initiating a hazard risk or mitigation project and risk discussions within the watershed

When:

- After an area/watershed has been prioritized
- Before a Risk MAP project is scoped or funded

Required for new and updated...

- Flood studies
- Flood risk assessments
- Mitigation planning technical assistance projects

Why:

- Increases visibility of flood risk information, education, involvement
- Helps inform whether a Risk MAP project will occur in the watershed



Middle Columbia-Hood Discovery

- **Federal and State Data Collection**
- **Local Issues: Identify Risk MAP Needs**
 - Need support with mitigation planning?
 - Need mitigation projects?
 - Need new flood study data?
 - Need training on floodplain management?
 - Need support developing a hazard risk outreach program?
 - What else can FEMA do to help your community become resilient?
- **Pre-Discovery Interviews: June 2015**
- **Discovery Meetings: Week of July 20-24, 2015**
- **Risk MAP Project(s) Identified**
- **Possible FEMA Funding Allocated for Risk MAP Project**

Discovery Interview

- **Local Contacts**
- **Data**
 - LiDAR
 - Local or Regional GIS Data
- **Mitigation Planning**
 - Desired Mitigation Projects
- **Local Hazards**
 - Earthquakes
 - Wildfires
 - Landslides
 - Severe Storms
 - Flooding
- **Levees**
- **Environmentally Sensitive Areas**
- **Communications and Outreach**
- **Compliance and Training**

Mitigation Planning		
How would you describe your level of involvement with the development of the mitigation plan? (Considerable, Moderate, Minimal)	Do you need assistance with mitigation planning in your community? (Yes, No, Possibly)	Mitigation Planning Comments, Explanations, Questions

Questions?

FEMA

- **Amanda Siok, Risk Analyst, amanda.siok@fema.dhs.gov**
- **Brett Holt, Mitigation Planner, brett.holt@fema.dhs.gov**
- **David Ratté, Regional Engineer, david.ratte@fema.dhs.gov**

OREGON

- **Steve Lucker, State Risk MAP Coordinator, stephen.lucker@state.or.us**
- **Christine Shirley, State NFIP Coordinator, christine.shirley@state.or.us**

STARR

- **Emily Whitehead, emily.whitehead@starr-team.com**
- **Adam Pooler, adam.pooler@starr-team.com**
- **Becca Fricke-Croft, becca.croft@starr-team.com**
- **Joshua Crowley, joshua.crowley@starr-team.com**

Resilience Action Partners

- **Kathleen Warren, kathleen.warren@mbakerintl.com**