

FEMA REGION X
RISK MAP DISCOVERY INTERVIEW
HOOD RIVER COUNTY, OREGON
JUNE 23, 2015 8:30 AM PST

Participants

Hood River County

- Mike Schrankel, Hood River County GIS Coordinator
- John Roberts, Hood River County Community Development Director
- Barbara Ayers, Hood River County Emergency Management Director

FEMA Region X

- David Ratte, Regional Engineer

State of Oregon

- Steve Lucker, Floodplain/Natural Hazards Mapping Specialist

Resilience Action Partners (RAP)

- Kathleen Warren, Region X CERC Lead

STARR (FEMA Contractor)

- Becca Fricke-Croft, Regional Service Center (RSC) (host)
- Josha Crowley, RSC
- Adam Pooler, GIS Lead/Senior GIS Analyst
- Andy Dobson, Senior Planner

DOGAMI

- Jed Roberts

Discussion

Becca Fricke-Croft and Josha Crowley made introductions and presented an overview of the RiskMAP program and the different projects and products that can benefit communities. Our overall goal is discovering how FEMA can help Hood River County become a more hazard and disaster-resilient community. A copy of the presentation is included with these meeting notes as Appendix A.

Pre-Discovery meetings and interviews with communities within the Middle Columbia-Hood Watershed have been scheduled throughout June and July, 2015. Discovery Meetings are tentatively scheduled the week of July 20, 2015. Barbara Ayers mentioned that the Hood River County Fair is scheduled that same week, and community personnel and officials may be busy with that event earlier in the week.

The following information was collected during the interview. Unless otherwise noted, all comments are from Hood River County representatives.

Community Contacts

- Louie Ambers and Mike McElwee with the Hood River Port Authority added to the community contact database

Fact Sheets and Discovery Mapping

The draft Discovery Map illustrates a variety of geographic data from state, national, and (when possible) local sources. These include basic geologic and geographic features, jurisdiction boundaries, hazard locations, critical facilities, floodplain data, infrastructure, aerial images, and environmentally sensitive areas. One reason for this interview is to review and refine the draft Discovery Map before the in-person Discovery Meeting with the community.

- Oregon OEM RAPTOR Mapping program was mentioned by Barbara Ayers as a possible source for additional datasets—Adam will contact Daniel Strobe to look into it
- New LiDAR collection project is underway through DOGAMI—Jed mentioned they have updated topographic data available we may be able to add to Discovery Map
- Mike Schrankel is the county GIS Coordinator who will coordinate with Adam Pooler on updating Discovery Map with local datasets

Planning

- Valuable or critical areas in Hood River County mentioned in the interview include:
 - Waterfront areas which have undergone many improvements over the last several years including trails, park development, marina, and wind surfing beaches. The waterfront is vital for tourism and economic development in Hood River County
 - Hood River/Columbia River confluence area
 - Highway 35 which is one of the few north-south running roads in area, extending from Mt. Hood directly to Columbia River. In the past this road has experienced some flooding
 - Fruit orchards in surrounding agricultural areas—very high-value land and important to economy
 - Forested areas—forestry also important to local economy
- The Hood River County hazard mitigation plan is scheduled for an update in 2017. Barbara regularly coordinates with state agencies on the plan, mitigation actions, and implementation projects. The HMP contains many implementation strategies and metrics that are regularly referred to by communities
- Top hazard mitigation priorities include frequent winter storms, the current drought declaration, and wildfire protection
- Hood River County uses FEMA grants for ongoing water supply studies, ground water irrigation and storage projects

**FEMA REGION X
RISK MAP DISCOVERY INTERVIEW
HOOD RIVER COUNTY, OREGON**

- Hood River Soil and Water District has completed a water quality/water supply analysis for drinking and agricultural use. The study highlights that the community relies on snow melt for water supply. The current drought shows vulnerability to shortages and need for storage and better water management

Earthquake Hazard

- There are several fault lines nearby but earthquakes are not a frequent event and risk is low
- The Cascadia Subduction Event mentioned as statewide concern by Barbara
- Mt. Hood is a dormant volcano and there is some concern if proximity makes the County more vulnerable to earthquakes. According to Jed Roberts, this concern is legitimate because recent studies of Mt. Hood show seismic activity. Models for potential eruption show mudslides into rivers, significant damage, ash plume, landslide/mudslides
- These vulnerable areas are identified in HMP—Hood River County is aware of and concerned about potential impacts

Wildfire Hazard

- Local fire department administration has taken a lead role in educating residents, analyzing risk areas, managing potential risk. This includes rating structures, clearing vegetation, and building fire-breaks.
- Peter Maxwell was mentioned as a local firefighter contact to invite to Discovery Meeting
- Ready, Set, Go campaign underway for disaster preparedness including outreach and education projects using models from national program. Hood River is also using resources from Fire Wise Program to reach out to homeowners in conjunction with inspecting and rating individual property risk from wildfire
- 75% of Hood River County is national forest land and vulnerable to wildfire
- Title 3 funding used to write/update wildfire protection plan including extensive property surveys, safety rating, tree-thinning, and building fire breaks along important highway corridors

Landslide Hazard

- Two recent slide locations mentioned by Barbary Ayers: Parkdale and Cascade Locks
- Other vulnerable locations discussed include
 - Steep slopes along Highway 85 and Highway 35. These are important transportation corridors that could be blocked by falling debris
 - Entire length of I-84 steeply sloped, rock falls/slides can happen and block transportation routes
- Jed Roberts discussed a new DOGAMI study captures landslide potential from LiDAR analysis, and channel migration study. GIS data from this project may be available for the Discovery Map
- Hood River County Natural Hazards Mitigation Plan (2012) includes an appendix on landslides

Severe Storm Hazard

**FEMA REGION X
RISK MAP DISCOVERY INTERVIEW
HOOD RIVER COUNTY, OREGON**

- Snow and ice storms are frequent during winter months. Some storms can become severe and dangerous.
- Every winter, I-84 is closed at some point because of snow, ice, and tree debris
- Strong, constant winds are part of what make this area unique, but exacerbate winter storm severity
- Vulnerable locations include east-west transportation corridors and Interstate 84
- Shelter needs and facilities
- Sheltering displaced residents has not been a concern, but the next storm could require evacuations (the Hood River nearly overtopped banks last winter)
- Barbara discussed that the County is lacking a good catalog of identified shelters, and reduction in Red Cross offices has left them without that organization support
- There are some warming shelters identified in the event of severe winter storms

Emergency Communications

- Hood River County uses a variety of online media, reverse 9-1-1 services, flash-alert for media press releases, and emergency notification opt-in programs. The Everbridge Program was mentioned specifically
- Pete Hughes with the Sheriff Dept. and Mike Matthews with Public Health mentioned as contacts to work with on communication and outreach

Flood Hazard

- Mike Schrankel discussed how the current digital flood mapping countywide is all but unusable. Inaccuracies are throughout data, illustrated floodplain does not follow topography, studies are antiquated and paper map-based. Officials do not use any digital flood data because of inaccuracies
- New floodplain studies and mapping very much needed. Mike will work on listing priority areas to focus on at Discovery Meeting (he did not want to go into detail during phone interview because of the number of areas needing re-study)

Levees

- The County is not aware of any other levee structures other than one in City of Hood River maintained by Corps of Engineers. There was discussion regarding the fill areas along waterfront for new commercial development and marina projects

Environmentally Sensitive Areas

- Areas are identified on local zoning maps as environmental protection zones. These are part of GIS dataset from County and includes floodplain overlay zones, wetland areas, and stream habitats

Communications and Outreach

**FEMA REGION X
RISK MAP DISCOVERY INTERVIEW
HOOD RIVER COUNTY, OREGON**

- Key players in communication and outreach to residents are local media stations (Spanish-speaking station mentioned specifically), sheriff and fire departments, Hood River Bis Buzz (local newsletter marketed toward small business community), Hood River News, and Bi-Coastal Media radio stations
- What kind of outreach works best in your community
- Peter Maxwell mentioned as a communications/outreach contact—he did extensive community outreach as part of the Wildfire Protection Plan
- Hood River County Sheriff's Department has active website and social media tools as do local fire departments
- Barbara mentioned the Cascadia Drills—lots of outreach and education projects as part of this emergency management training, and it provides a good model for community coordination
- Local schools work well with communities and distributing information to parents

Next Steps

- Steve mentioned looking ahead to bringing RiskMAP and Hazard Mitigation Plan update together, coordinating the two projects and making both better
- STARR will coordinate with Hood River County officials on the upcoming Discovery Meeting dates, times, and locations.
- David Ratte discussed how inter-relationships between hazards have caused changes to mitigation planning, and all types of hazards usually occur at the same time. As well as looking at future conditions or built-out conditions.

Appendix A: Interview Presentation



FEMA

Risk MAP Discovery

Middle Columbia-Hood Watershed

Information Exchange Sessions
June 2015

RiskMAP
Increasing Resilience Together



Information Exchange Agenda

- **Overview of Risk MAP and Discovery**
- **Introduction to Enhanced Risk MAP Products**
- **Interactive Questionnaire**
- **Close**

The Vision for Risk MAP

Through collaboration with State, Local, and Tribal entities, Risk MAP will deliver quality data that increases public awareness and leads to action that reduces risk to life and property



RiskMAP

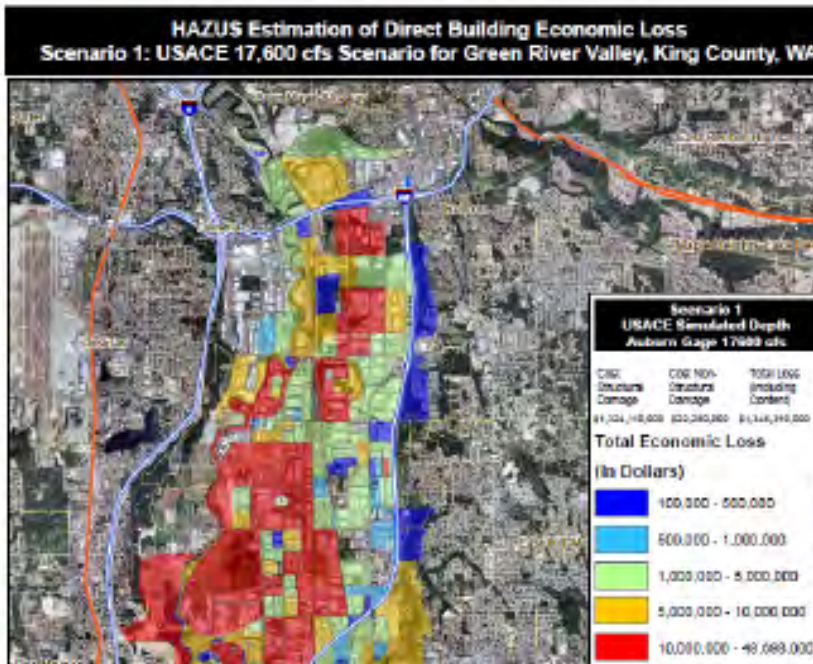
Increasing Resilience Together

- Collaborative approach
- Goals: quality data, public awareness, action that reduces risk
- Watershed-oriented
- Multi-Hazard
- Focus on up-front coordination
- Discovery is mandatory

Risk MAP Products

Multi-Frequency Depth & Water-Surface Elevation (WSE) Grids

10%, 2%, 1%, 0.5%, 0.2% annual chance profiles



Inundation

- 3 feet or less
- 3 to 6 feet
- 6 feet +

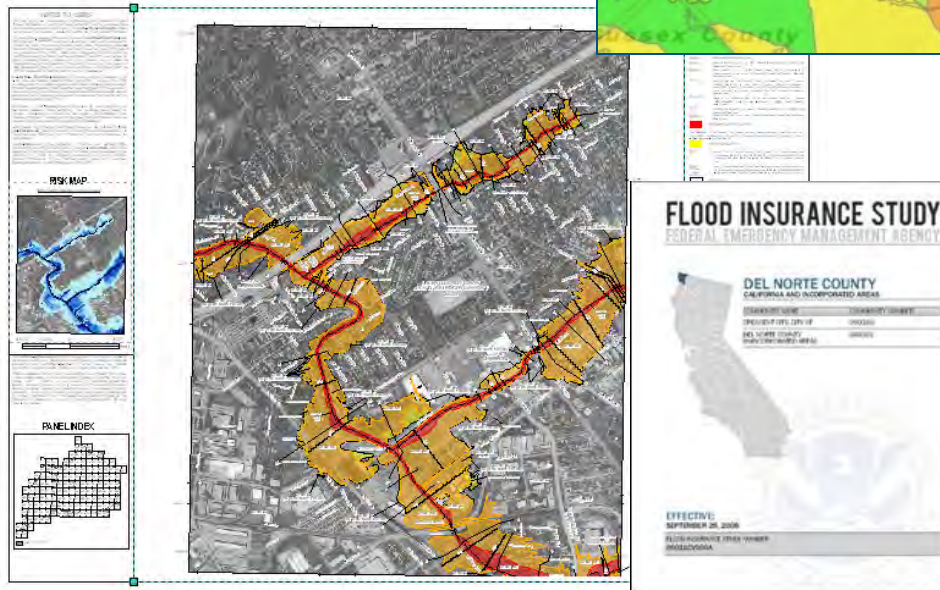
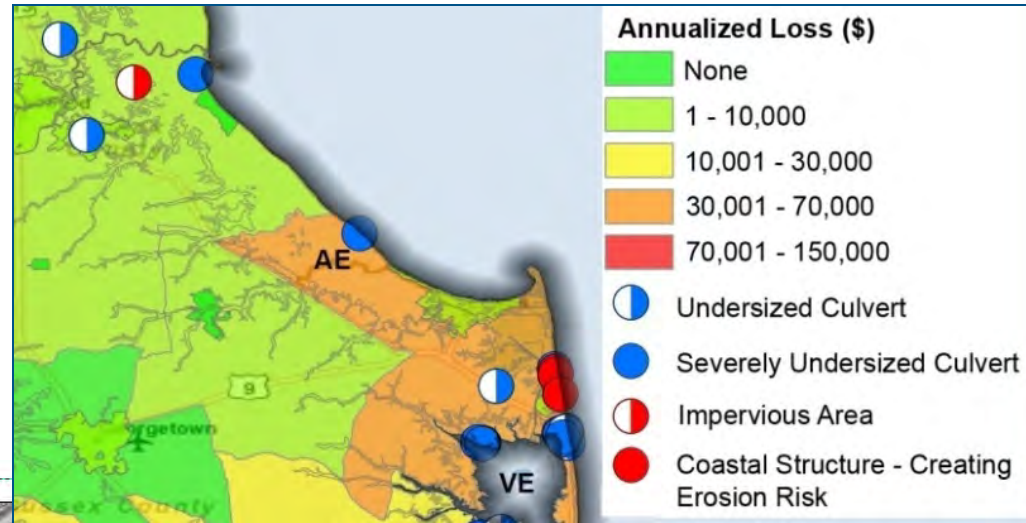
HAZUS Risk Assessment & National Flood Risk Layer

Enables communities to understand risk by reference to existing structure loss

Risk MAP Products

Contributing Hazard Factors

Highlights areas of concern identified throughout project



FIS Reports and DFIRM Maps

DFIRM and FIS will continue to fulfill regulatory requirements and support the NFIP

Discovery

Discovery is the process of data collection and analysis with the goal of initiating a hazard risk or mitigation project and risk discussions within the watershed

When:

- After an area/watershed has been prioritized
- Before a Risk MAP project is scoped or funded

Required for new and updated...

- Flood studies
- Flood risk assessments
- Mitigation planning technical assistance projects

Why:

- Increases visibility of flood risk information, education, involvement
- Helps inform whether a Risk MAP project will occur in the watershed



Middle Columbia-Hood Discovery

- **Federal and State Data Collection**
- **Local Issues: Identify Risk MAP Needs**
 - Need support with mitigation planning?
 - Need mitigation projects?
 - Need new flood study data?
 - Need training on floodplain management?
 - Need support developing a hazard risk outreach program?
 - What else can FEMA do to help your community become resilient?
- **Pre-Discovery Interviews: June 2015**
- **Discovery Meetings: Week of July 20-24, 2015**
- **Risk MAP Project(s) Identified**
- **Possible FEMA Funding Allocated for Risk MAP Project**

Discovery Interview

- **Local Contacts**
- **Data**
 - LiDAR
 - Local or Regional GIS Data
- **Mitigation Planning**
 - Desired Mitigation Projects
- **Local Hazards**
 - Earthquakes
 - Wildfires
 - Landslides
 - Severe Storms
 - Flooding
- **Levees**
- **Environmentally Sensitive Areas**
- **Communications and Outreach**
- **Compliance and Training**

Mitigation Planning		
How would you describe your level of involvement with the development of the mitigation plan? (Considerable, Moderate, Minimal)	Do you need assistance with mitigation planning in your community? (Yes, No, Possibly)	Mitigation Planning Comments, Explanations, Questions

Questions?

FEMA

- **Amanda Siok, Risk Analyst, amanda.siok@fema.dhs.gov**
- **Brett Holt, Mitigation Planner, brett.holt@fema.dhs.gov**
- **David Ratté, Regional Engineer, david.ratte@fema.dhs.gov**

OREGON

- **Steve Lucker, State Risk MAP Coordinator, stephen.lucker@state.or.us**
- **Christine Shirley, State NFIP Coordinator, christine.shirley@state.or.us**

STARR

- **Emily Whitehead, emily.whitehead@starr-team.com**
- **Adam Pooler, adam.pooler@starr-team.com**
- **Becca Fricke-Croft, becca.croft@starr-team.com**
- **Joshua Crowley, joshua.crowley@starr-team.com**

Resilience Action Partners

- **Kathleen Warren, kathleen.warren@mbakerintl.com**