

**FEMA REGION X
RISK MAP DISCOVERY INTERVIEW
CITY OF CASCADE LOCKS, OREGON
JUNE 23, 2015 10:00 AM PST**

Participants

City of Hood River

- Gordon Zimmerman, Cascade Locks City Administrator
- Keith Terry, Cascade Locks Electric Foreman
- Jesse Metheny, Cascade Locks Fire Chief
- Kathy Woosley, Cascade Locks City Recorder

FEMA Region X

- David Ratte, Regional Engineer

Resilience Action Partners (RAP)

- Kathleen Warren, Region X CERC Lead

STARR (FEMA Contractor)

- Josha Crowley, Regional Service Center (RSC) Lead
- Adam Pooler, GIS Lead/Senior GIS Analyst
- Andy Dobson, Senior Planner

Discussion

Josha Crowley made introductions and presented an overview of the Risk MAP program and the different projects and products that can benefit communities. Our overall goal is discovering how FEMA can help Cascade Locks become a more hazard and disaster-resilient community. A copy of the presentation is included with these meeting notes as Appendix A.

Pre-Discovery Meetings Interviews with communities within the Middle Columbia-Hood Watershed have been scheduled throughout June and July, 2015. Discovery Meetings are scheduled for July 20, 21 & 22, 2015.

The following information was collected during the interview. Unless otherwise noted, all comments are from Cascade Locks representatives.

Community Contacts

- Josha will coordinate with Cascade Locks on updating contacts. There may be one or two other names to add to our database.

Fact Sheets and Discovery Mapping

The draft Discovery Map illustrates a variety of geographic data from state, national, and (when possible) local sources. These include basic geologic and geographic features, jurisdiction boundaries, hazard locations, critical facilities, floodplain data, infrastructure, aerial images, and environmentally sensitive areas. One reason for this interview is to review and refine the draft Discovery Map before the in-person Discovery Meeting with the community.

- The new community fire hall needs to be located on the draft Discovery Map—we have the old location illustrated
- Cascade Locks does not have a specific person assigned now, but they are working to organize a GIS department within their administration. For questions and updates, we should work with the County GIS department

Planning

- Valuable locations and facilities include the electric utility, Thunder Island Marine Park, and the state airfield adjacent to Columbia River
- Cascade Locks participated in most recent countywide hazard mitigation plan
- Top hazard mitigation priorities include wildfire hazards, winter storms, and coal trains and oil trains moving through Columbia River Gorge and communities (15-17 trains weekly)
- The Port of Cascade Locks and City of Cascade Locks are two separate government entities—may need to contact Port separately for information

Earthquake Hazard

- There are many fault lines in the area and seismic activity associated with Mt. Hood, but no earthquake events in recent memory

Wildfire Hazard

- Wildfires are significant hazard—community is in the middle of a national forest
- Vulnerable locations include a fire site from 2003 located on the draft Discovery Map, and the heavily wooded hillsides surrounding the community
- Mitigation projects or initiatives include wildland defensible space, vegetation clearing, fuel reduction projects

Landslide Hazard

- The entire community is actually built on top of an 800 year-old landslide. No continued landslide risk is anticipated in this area. There is some concern that landslide could continue to move as a result of seismic activity

Severe Storm Hazard

- Severe winter ice storms are routine, but not a lot of snow generally because of prevailing weather patterns

**FEMA REGION X
RISK MAP DISCOVERY INTERVIEW
CITY OF CASCADE LOCKS, OREGON**

- Cascade Locks is experienced dealing with tree damage to electric lines—power comes back on fairly quickly after severe storm events
- Communication and warning systems include newspaper, radio, reverse 9-1-1. The Port of Cascade Locks uses a lot of social media; City of Cascade Locks does not as much.
- Mitigation projects or initiatives include proposals to run utility lines underground—service area extends outside Cascade Locks along Columbia River valley

Flood Hazard

- Columbia River Dam controls water levels, no flood concern from Columbia River
- Rudolph Creek presents some local flooding hazards, Oregon Department of Transportation (ODOT) road culvert improvements have lessened this somewhat (unknown if data is available from ODOT modeling altered stream flow)
- Dry Creek and Herman Creek not a concern, mapping is inaccurate because it shows floodplain extending inland from Columbia River
- Cascade Locks has FIRM comments, revisions, questions
- Q3 data is the only digital flood hazard mapping data available. The Flood Insurance Study (FIS) for Hood River County is very old. The Columbia River is the only waterway with a study; three cross streams are not studied or mapped
- There was discussion regarding new Zone A modeling along the three creeks to build approximate floodplain areas if any are present (based off new topography, ODOT roadway and bridge improvements)

Environmentally Sensitive Areas

- Entire national forest surrounding the community are sensitive and protected
- Significant regulations and protections in place along Columbia River through Columbia River Gorge Commission
- Cascade Locks has its own planning and zoning regulations
- Concern with oil and coal trains moving through area regularly, and interstate highway, railroad, and Columbia River all meet at SW corner of Cascade Locks at Bridge of the Gods

Communications and Outreach

- Current community outreach/engagement includes using utility billing mailers
- All TV and radio media is broadcast out of Portland or Hood River. The local newspaper is the best outlet for information in Cascade Locks
- Josha explained FEMA-offered materials and resources, including online newsletter, training opportunities, and other options that are available through the Region X Service Center (RSCX)

Next Steps

- STARR will continue to coordinate with Cascade Locks on the final Discovery Meeting dates, times, and locations, and encourages the community to participate

Appendix A: Interview Presentation



FEMA

Risk MAP Discovery

Middle Columbia-Hood Watershed

Information Exchange Sessions
June 2015

RiskMAP
Increasing Resilience Together



Information Exchange Agenda

- **Overview of Risk MAP and Discovery**
- **Introduction to Enhanced Risk MAP Products**
- **Interactive Questionnaire**
- **Close**

The Vision for Risk MAP

Through collaboration with State, Local, and Tribal entities, Risk MAP will deliver quality data that increases public awareness and leads to action that reduces risk to life and property



RiskMAP

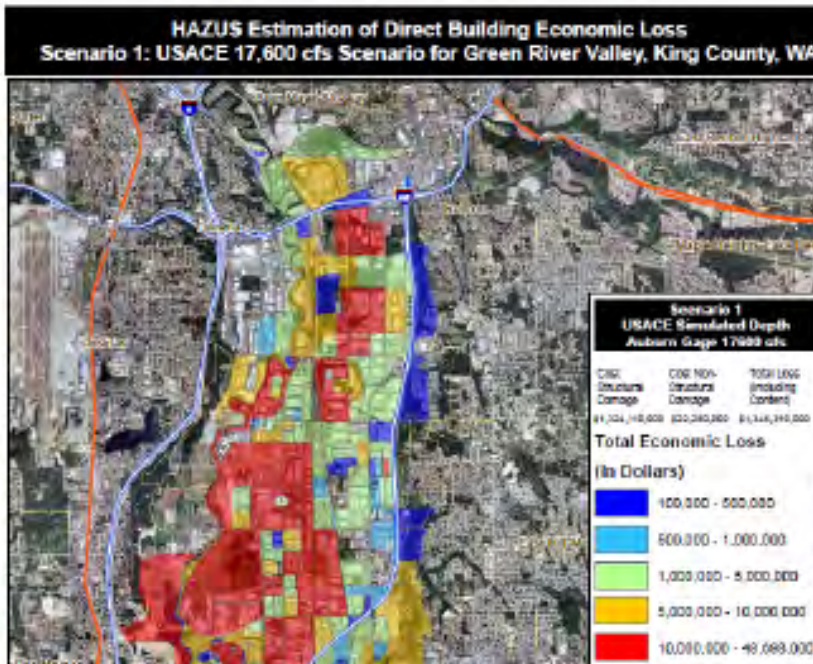
Increasing Resilience Together

- Collaborative approach
- Goals: quality data, public awareness, action that reduces risk
- Watershed-oriented
- Multi-Hazard
- Focus on up-front coordination
- Discovery is mandatory

Risk MAP Products

Multi-Frequency Depth & Water-Surface Elevation (WSE) Grids

10%, 2%, 1%, 0.5%, 0.2% annual chance profiles



Inundation

- 3 feet or less
- 3 to 6 feet
- 6 feet +

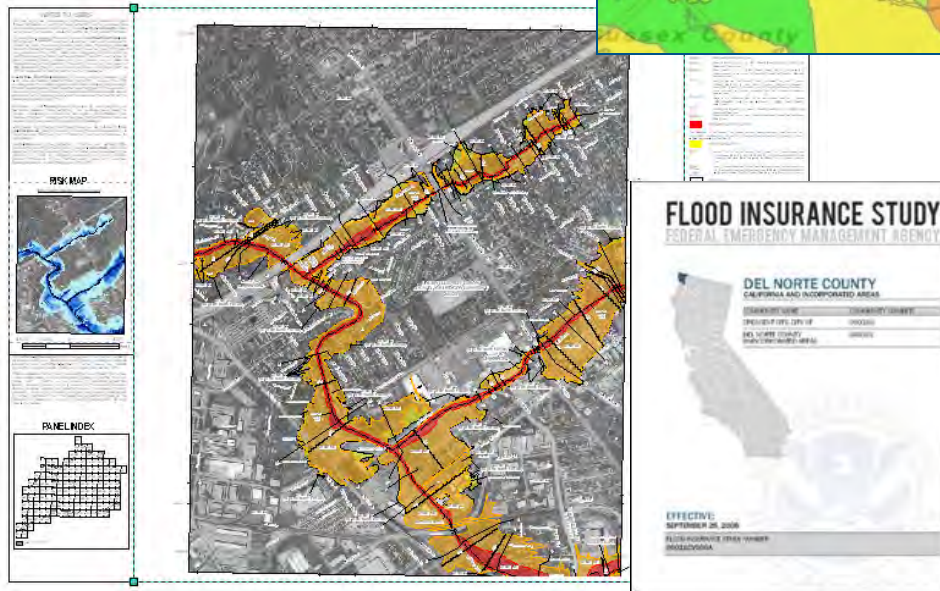
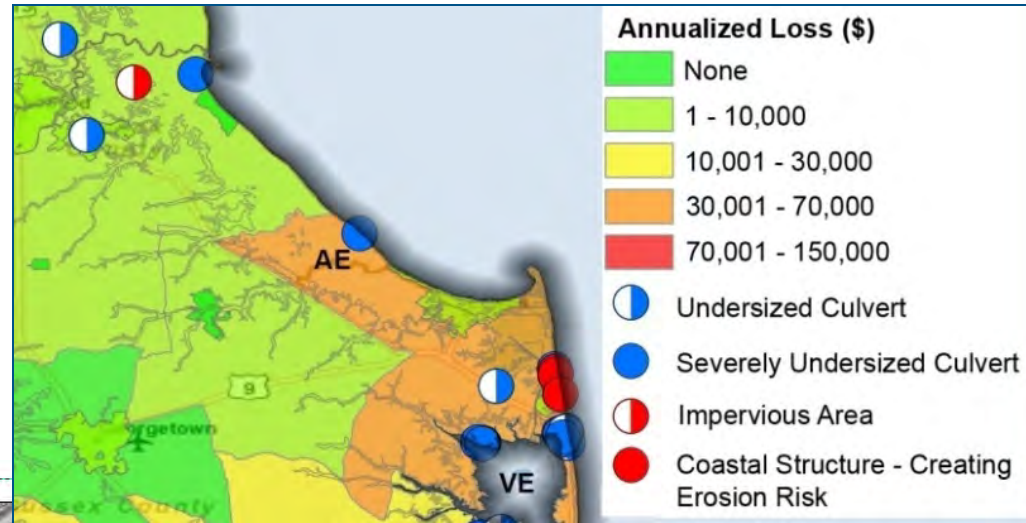
HAZUS Risk Assessment & National Flood Risk Layer

Enables communities to understand risk by reference to existing structure loss

Risk MAP Products

Contributing Hazard Factors

Highlights areas of concern identified throughout project



FIS Reports and DFIRM Maps

DFIRM and FIS will continue to fulfill regulatory requirements and support the NFIP

Discovery

Discovery is the process of data collection and analysis with the goal of initiating a hazard risk or mitigation project and risk discussions within the watershed

When:

- After an area/watershed has been prioritized
- Before a Risk MAP project is scoped or funded

Required for new and updated...

- Flood studies
- Flood risk assessments
- Mitigation planning technical assistance projects

Why:

- Increases visibility of flood risk information, education, involvement
- Helps inform whether a Risk MAP project will occur in the watershed



Middle Columbia-Hood Discovery

- **Federal and State Data Collection**
- **Local Issues: Identify Risk MAP Needs**
 - Need support with mitigation planning?
 - Need mitigation projects?
 - Need new flood study data?
 - Need training on floodplain management?
 - Need support developing a hazard risk outreach program?
 - What else can FEMA do to help your community become resilient?
- **Pre-Discovery Interviews: June 2015**
- **Discovery Meetings: Week of July 20-24, 2015**
- **Risk MAP Project(s) Identified**
- **Possible FEMA Funding Allocated for Risk MAP Project**

Discovery Interview

- **Local Contacts**
- **Data**
 - LiDAR
 - Local or Regional GIS Data
- **Mitigation Planning**
 - Desired Mitigation Projects
- **Local Hazards**
 - Earthquakes
 - Wildfires
 - Landslides
 - Severe Storms
 - Flooding
- **Levees**
- **Environmentally Sensitive Areas**
- **Communications and Outreach**
- **Compliance and Training**

Mitigation Planning		
How would you describe your level of involvement with the development of the mitigation plan? (Considerable, Moderate, Minimal)	Do you need assistance with mitigation planning in your community? (Yes, No, Possibly)	Mitigation Planning Comments, Explanations, Questions

Questions?

FEMA

- **Amanda Siok, Risk Analyst, amanda.siok@fema.dhs.gov**
- **Brett Holt, Mitigation Planner, brett.holt@fema.dhs.gov**
- **David Ratté, Regional Engineer, david.ratte@fema.dhs.gov**

OREGON

- **Steve Lucker, State Risk MAP Coordinator, stephen.lucker@state.or.us**
- **Christine Shirley, State NFIP Coordinator, christine.shirley@state.or.us**

STARR

- **Emily Whitehead, emily.whitehead@starr-team.com**
- **Adam Pooler, adam.pooler@starr-team.com**
- **Becca Fricke-Croft, becca.croft@starr-team.com**
- **Joshua Crowley, joshua.crowley@starr-team.com**

Resilience Action Partners

- **Kathleen Warren, kathleen.warren@mbakerintl.com**