

## Inside this Issue

- 1** LiDAR in Idaho
- 2** National Resilience Competition
- 2** Catalog of Federal Funding
- 3** FEMA Map Service Center Redesign
- 3** NORFMA News
- 3** L278 Coming to Region X
- 3** Calendar

Strategic Alliance for Risk Reduction  
FEMA Region X Service Center  
20700 44<sup>th</sup> Avenue West, Suite 110  
Lynnwood, Washington 98036  
(425) 329-3699

# News from Region X

## Demand for LiDAR Strong in Idaho

**Local governments encouraged to request cost estimates to partner with Risk MAP**

### What is LiDAR?

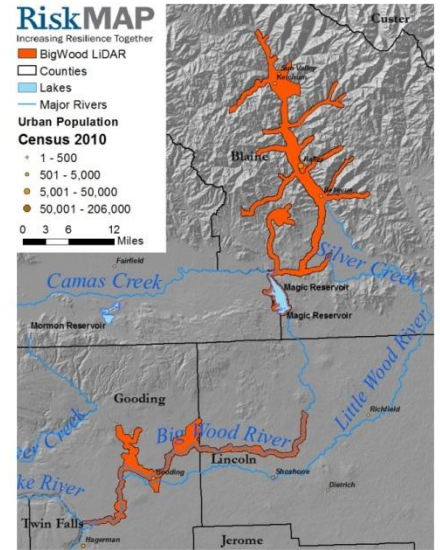
Light Detection and Ranging (LiDAR) technology is a mapping tool that works on the principal of radar but uses a laser to make very accurate laser imaging maps. With a land space of more than 83,000 square miles there is a strong demand for this technology in Idaho. The LiDAR instrument uses lasers and mirrors and is about the size of a coffee table. It is loaded into an aircraft and flown over a pre-identified area. The resulting images look like something from the newest video game.

### How do I Use LiDAR?

LiDAR is used to create “topographic” or “elevation” maps. A small aircraft fitted with the instrument flies over an area once and then circles back to collect the next swath, ensuring a small amount of overlap. Large areas of information are collected using an eye-safe near infrared laser. The resulting maps are used for a variety of applications; which makes LiDAR technology highly desirable to federal, state, local, non-profit and academic partners.

### Who’s interested in buying LiDAR?

Through the Idaho Risk Mapping, Assessment and Planning (Risk MAP) program, the Federal Emergency Management Agency (FEMA) purchased hundreds of square miles of LiDAR in the past throughout Idaho. Often



**Big Wood LiDAR acquisition area (Watershed Sciences, 2011)**

communities like the City of Middleton will add local funds to scan additional areas of local interest. This year FEMA is purchasing 223 sq. mi. in the American Falls and Big Wood areas. Within two-weeks, local communities requested cost estimates for an additional 884 sq. mi. in addition to the Risk MAP partnership; that’s a grand total of over 1,107 square miles. LiDAR costs vary depending on how much is purchased. The more you buy the lower price per square mile.

### How does Cooperative LiDAR buying work?

Several Idaho counties are taking advantage of a cooperative LiDAR purchase by asking for cost estimates around the above areas. Local government units and the private/quasi-private sectors

*Continued on next page*

**LIDAR** (cont.)

coordinate with pre-planned LiDAR acquisitions in order to purchase their own additional data (buy-in or buy-up). This is important since getting the plane, instrument, surveyed ground control points and flight plans assembled at the acquisition site is often the most costly part of buying LiDAR. Cooperatively buying LiDAR to coincide with a planned flight is cost effective way to buy LiDAR.

**How does my jurisdiction take action?**

If your jurisdiction is interested in partnering for a LiDAR cooperative-buy, and possibly realizing a reduction in price due to the collective effort, then it's a great time to engage in the process and partner with the Risk MAP program at the Idaho Bureau of Homeland Security (BHS). Typical partnerships include 1) adding to the acquisition area of a pre-planned flight using local funds or 2) acquiring enhanced processing of the data using local funds. You can request a cost estimate and then work directly with the vendor who coordinates with cooperative buying partners

*Our thanks to Ryan McDaniel, Risk MAP Coordinator for Idaho, for this article. For more information, email [rmcdaniel@bhs.idaho.gov](mailto:rmcdaniel@bhs.idaho.gov).*

## National Disaster Resilience Competition

*From the Office of the Press Secretary:*

On June 14, President Obama announced the National Disaster Resilience Competition. Responding to demand from state, local and tribal leaders who are working to increase the safety and security of

their communities, the nearly \$1 billion competition will invite communities that have experienced natural disasters to compete for funds to help them rebuild and increase their resilience to future disasters.

The competition will support innovative resilience projects at the local level while encouraging communities to adopt policy changes and activities that plan for the impacts of extreme weather and climate change and rebuild affected areas to be better prepared for the future.

Communities across the country are contending with more frequent or severe storms, flooding, drought, and wildfire, and have already recognized that in order to be prepared they must plan differently for a new and more uncertain reality. The competition underscores the ability communities have to not only recover from recent disasters but also rebuild better and stronger for the future. It will allow them to engage local stakeholders, nongovernmental organizations and the philanthropic sector to protect their own communities from the impacts of climate change by enhancing resilient infrastructure, building on sound science, and deploying innovative approaches to investments. These funds will enable eligible communities to access resources that help both recover from the previous disaster and make plans, decisions, and investments that make them more resilient to the next disaster.

Of the nearly \$1 billion available through the U.S. Department of Housing and Urban Development's (HUD) Community Development Block Grant-Disaster Recovery (CDBG-DR) funds from the Disaster Relief Appropriations Act of 2013, about \$820 million will be

available to all states and local governments that experienced a Presidentially-declared major disaster in 2011, 2012, and 2013. States in the Hurricane Sandy-affected region will be eligible to compete for approximately \$180 million, to help address critical housing needs, building on the successful model set forth by HUD's *Rebuild by Design* competition. All successful applicants will need to show how their proposed action relates to the disaster from which they are recovering. HUD will ensure that geographic diversity is a consideration in the selection of participating communities.

## Catalog of Federal Funding

The Catalog of Federal Funding for Watershed Protection is a comprehensive, searchable website from the United States Environmental Protection Agency (EPA). The website is a searchable database of financial assistance sources available to fund a variety of watershed protection project.

The search functions of the website are menu driven. You can select the type of assistance (grants/loans), eligible organization (business, watershed group, etc.), match requirements and funding agency (FEMA, EPA, etc.). You can search using the available keywords and add additional keywords to refine your search. This is a great tool for those looking to potentially pool funding together for mitigation and resiliency projects

*Visit <https://ofmpub.epa.gov> for more information and to begin your search for funding for your next project.*

**RiskMAP**  
Increasing Resilience Together

## Upcoming Events & Training

(All times Pacific)

### Elevation Certificates

July 10, 10am  
Online\* - 2 CECs

### CRS Webinar Series: Introduction to CRS

July 15, 10am  
October 21, 10am  
Online\* - 1 CEC

### CRS Webinar Series: Drainage System Maintenance (Activity 540)

July 16, 10am  
September 17, 10am  
Online\* - 1 CEC

### NFIP Basics

July 24, 10am  
Online\* - 1 CEC

### CRS Webinar Series: Preparing an Annual Recertification

August 19, 10am  
September 16, 10am  
Online\* - 1 CEC

### CRS Webinar Series: Natural Floodplain Functions

August 20, 10am  
Online\* - 1 CEC

### L273 Managing Floodplain Development

September 29-October 2  
Lacey, Washington  
[llyssa.Plumer@fema.dhs.gov](mailto:llyssa.Plumer@fema.dhs.gov)

### CRS Webinar Series: Developing Outreach Projects (Activity 330)

October 22, 10am  
Online\* - 1 CEC

### L278 Community Rating System

November 17-20  
Tacoma, Washington  
[llyssa.Plumer@fema.dhs.gov](mailto:llyssa.Plumer@fema.dhs.gov)

\*To register for online courses, visit STARR's training site online at [j.mp/starronlinetraining](http://j.mp/starronlinetraining), or email [RXTraining@starr-team.com](mailto:RXTraining@starr-team.com).

## FEMA Map Service Center (MSC) Redesign

FEMA will be launching a redesigned and enhanced Map Service Center (MSC) later this summer. The redesign and enhancements will improve the user experience. Some of the existing business processes for national and regional stakeholders will be affected.

- All flood hazard products will be available free of charge.
- The new products “catalog” will have enhanced functionality; therefore, the MSC Store, the Digital Post Office (DPO), Express Document Delivery (EDDIE), and EDDIE for Disasters tools will no longer be required
- Current LOMC and FMSIS accounts and subscriptions will be discontinued. The redesign will include a free subscription system.
- All direct links to MSC pages other than the homepage will no longer work as intended and will redirect to the MSC homepage

*If you have any questions about the MSC redesign, please contact the CDS Outreach Team at [outreach@riskmapcds.com](mailto:outreach@riskmapcds.com)*

### Ask the Help Desk

If you have questions about a mapping project, policy changes, mitigation planning, training, or general questions related to the NFIP, please contact the STARR Region X Help Desk. STARR staff will research your question and respond within three business days.

Our email address is [RegionXHelpDesk@starr-team.com](mailto:RegionXHelpDesk@starr-team.com).

## NORFMA News

NORFMA is offering two Basic HEC-RAS Short Courses this summer. The first session will be held August 20-22 in Hillsboro, Oregon. The second session will be held September 10-12 in Boise, Idaho.

Visit [www.norfma.org](http://www.norfma.org) for details and registration or email Henry Hu, [hhu@westconsultants.com](mailto:hhu@westconsultants.com).

## L278 Coming to Region X


### Community Rating System

November 17-20  
Tacoma, Washington

FEMA Region X and the NORFMA are hosting this course, which covers the Community Rating System (CRS). The course will cover activities eligible for credit under the 2013 CRS Coordinator's Manual, how a community applies to join, and how a community modifies an application to improve its classification.

This course is intended for a wide range of participants including FEMA Regional Office staff, NFIP State Coordinators, regional planning officials, local and tribal government officials, those who perform floodplain services for local governments, and others interested in learning about the CRS in order to provide technical assistance to communities seeking to apply for CRS credit.

Space is limited. Contact [llyssa.Plumer@fema.dhs.gov](mailto:llyssa.Plumer@fema.dhs.gov) if you are interested in attending.

Download the course announcement at [www.starr-team.com](http://www.starr-team.com). 

# RiskMAP

Increasing Resilience Together